

CASE I

SIGN SPACING	
Posted Speed	Sign Spacing
55 (4)	500' (150 m)
50-45 (4)	350' (100 m)
<45	200' (60 m)

- SYMBOLS**
- ↑ Arrow board
 - Work area
 - ⊕ Barricade or drum with steady burning monidirectional light
 - Flagger with traffic control sign
 - Cone, drum or barricade (Cones for daytime use only)
 - ┌ Sign on portable or permanent support
 - └ Type III Barricade

- ① Refer to SIGN SPACING TABLE for distances.
- ② Required for speeds > 40 mph (70 km/h).
- ③ Required if work exceeds 500' (164 m) or 1 block, repeat every 1 mile (1.6 km).
- ④ For speeds exceeding 45 mph (80 km/h) contact the District Operations Office for approval of sign spacing.
- ⑤ Cones at 25' (8 m) centers for 250' (75 m). Additional cones may be placed at 15 m (50') centers. When drums or type I or II barricades are used, the interval between devices may be doubled.
- ⑥ For approved sideroad closures.
- ⑦ Cones, drums or barricades at 20' (6 m) centers in taper.

GENERAL NOTES

This Standard is used where at anytime, day or night, any vehicle, equipment, workers or their activities encroach on the pavement requiring the closure of one traffic lane in an Urban area.

If the work operation is performed between 9:00 a.m. and 3:00 p.m. and does not exceed 15 min. Traffic protection shall be as shown for Standard 701426.

Calculate L as follows:

SPEED LIMIT	FORMULAS	
40 mph (70 km/h) or less:	English $L = \frac{WS^2}{60}$	(Metric) $L = \frac{WS^2}{150}$
45 mph (80 km/h) or greater:	$L = (W)(S) \quad L = 0.65(W)(S)$	

W = Width of offset in feet (meters).
S = Normal posted speed mph (km/h).

All dimensions are in inches (millimeters) unless otherwise shown.

Illinois Department of Transportation

APPROVED January 1, 2009
ENGINEER OF OPERATIONS

APPROVED January 1, 2009
ENGINEER OF DESIGN AND ENVIRONMENT

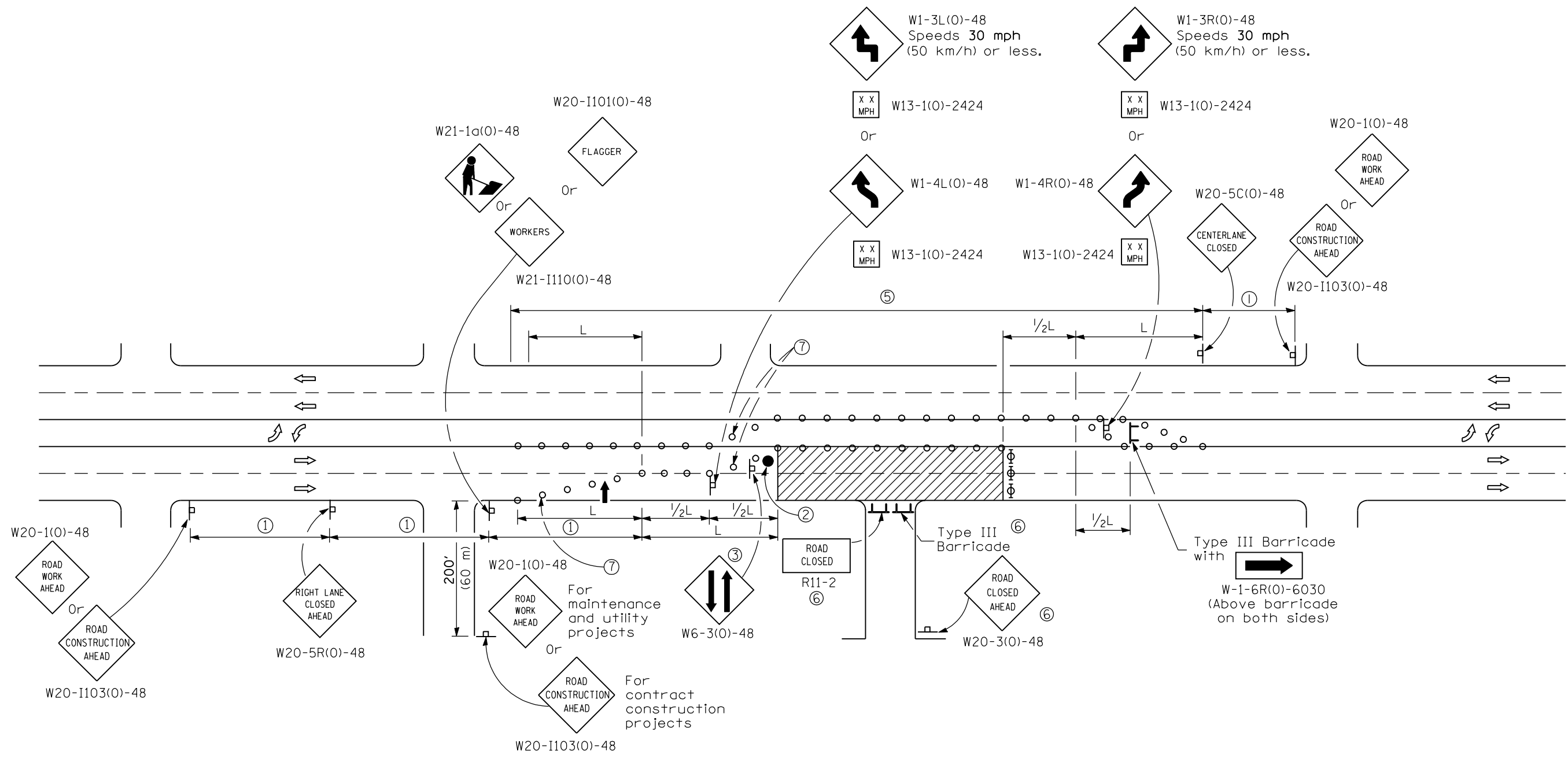
ISSUED 10-1-01

DATE	REVISIONS
1-1-09	Switched units to English (metric).
	Corrected sign No.'s.
1-1-08	Revised note ③, added note ⑦, added signs.

URBAN LANE CLOSURE, MULTILANE, 2W WITH BIDIRECTIONAL LEFT TURN LANE

(Sheet 1 of 4)

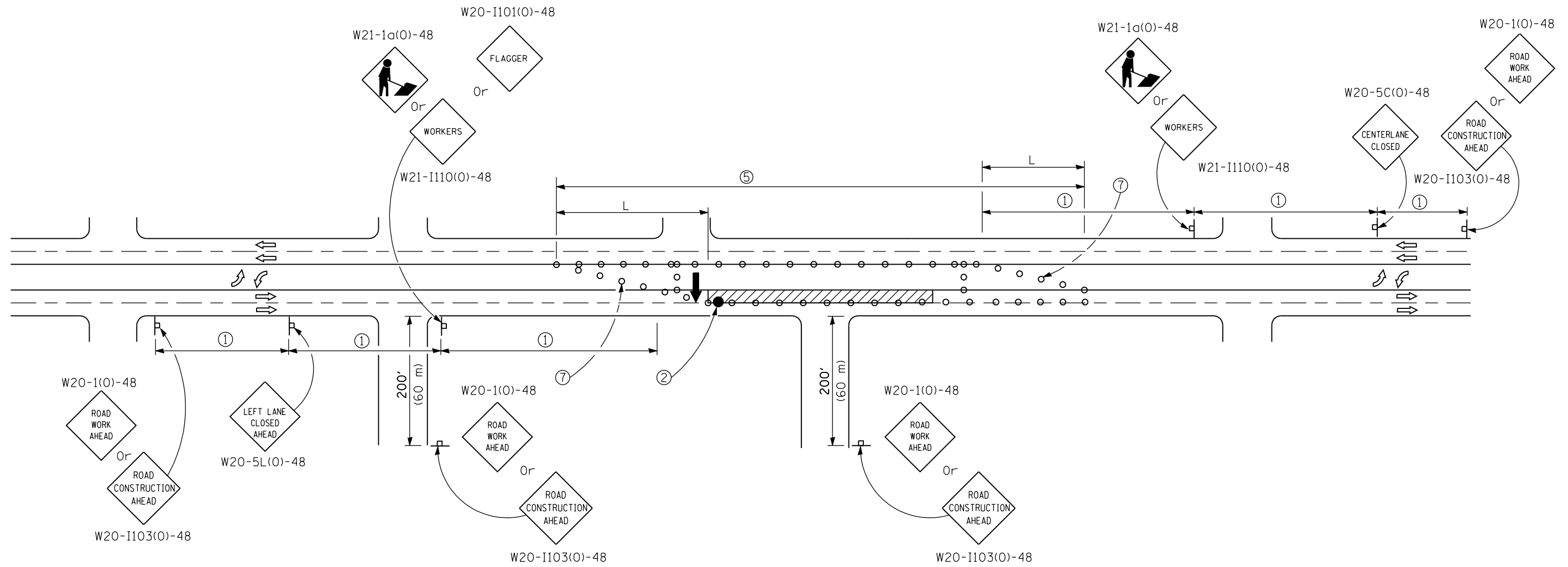
STANDARD 701602-04



CASE II

Illinois Department of Transportation
 APPROVED January 1, 2009
 ENGINEER OF OPERATIONS
 APPROVED January 1, 2009
 ENGINEER OF DESIGN AND ENVIRONMENT
 ISSUED 1-1-01

**URBAN LANE CLOSURE, MULTILANE,
 2W WITH BIDIRECTIONAL
 LEFT TURN LANE**
 (Sheet 2 of 4)
STANDARD 701602-04

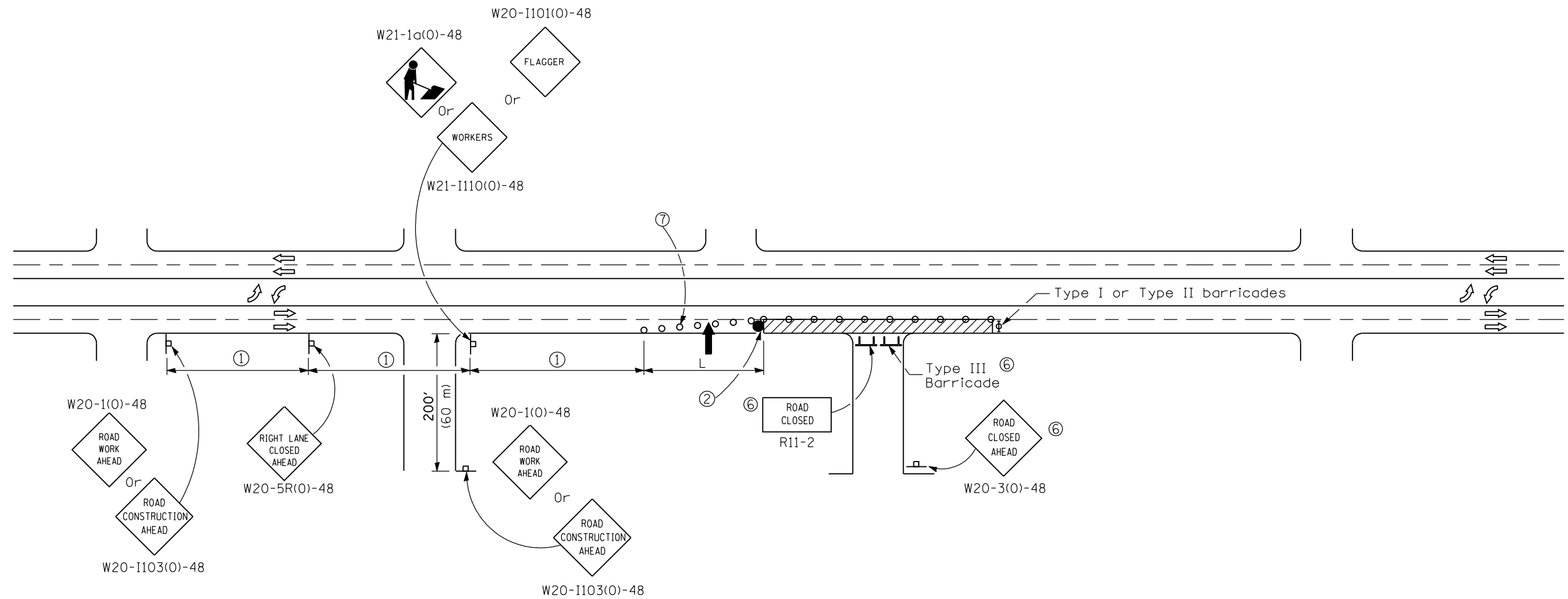


CASE III

Illinois Department of Transportation
 APPROVED January 1, 2009
 ENGINEER OF OPERATIONS
 APPROVED January 1, 2009
 ENGINEER OF DESIGN AND ENVIRONMENT

ISSUED
 1-1-01

URBAN LANE CLOSURE, MULTILANE,
 2W WITH BIDIRECTIONAL
 LEFT TURN LANE
 (Sheet 3 of 4)
STANDARD 701602-04



CASE IV

Illinois Department of Transportation

APPROVED January 1, 2009
 ENGINEER OF OPERATIONS

APPROVED January 1, 2009
 ENGINEER OF DESIGN AND ENVIRONMENT

ISSUED 1-1-01

URBAN LANE CLOSURE, MULTILANE,
 2W WITH BIDIRECTIONAL
 LEFT TURN LANE

(Sheet 4 of 4)

STANDARD 701602-04