

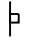


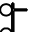



SIGN SPACING	
Posted Speed	Sign Spacing
55	500' (150 m)
50-45	350' (100 m)
<45	200' (60 m)

### SYMBOLS

-  Arrow board
-  Cone, drum or barricade
-  Sign on portable or permanent support
-  Work area
-  Barricade or drum with flashing light
-  Type III barricade with flashing lights
-  Flagger with traffic control sign.

- ① Refer to SIGN SPACING TABLE for distances.
- ② Required for speeds > 40 MPH
- ③ Use flagger sign only when flagger is present.
- ④ For approved sideroad closures.
- ⑤ Cones at 25' (8 m) centers for 250' (75 m). Additional cones may be placed at 50' (15 m) centers. When drums or Type I or Type II barricades are used, the interval between devices may be doubled.
- ⑥ Cones, drums or barricades at 6' (20 m) centers in taper.
- ⑦ Repeat every 1 mile (1.6 km).

### GENERAL NOTES

This Standard is used where at anytime, day or night, any vehicle, equipment, workers or their activities encroach on the pavement requiring the closure of one or more traffic lanes in an urban area.

Calculate L as follows:

SPEED LIMIT	FORMULAS	
40 mph (70 km/h) or less:	English $L = \frac{WS^2}{60}$	(Metric) $L = \frac{WS^2}{150}$
45 mph (80 km/h) or greater:	$L=(W)(S)$	$L=0.65(W)(S)$

W = Width of offset in feet (meters).

S = Normal posted speed mph (km/h).

All dimensions are in inches (millimeters) unless otherwise shown.

DATE	REVISIONS
1-1-09	Switched units to English (metric). Omitted large arrow signs.
1-1-08	Replaced arrow board with lane shift sign.
	Added notes ⑥ & ⑦

**URBAN LANE CLOSURE,  
MULTILANE, 2W WITH  
MOUNTABLE MEDIAN**

(Sheet 1 of 2)

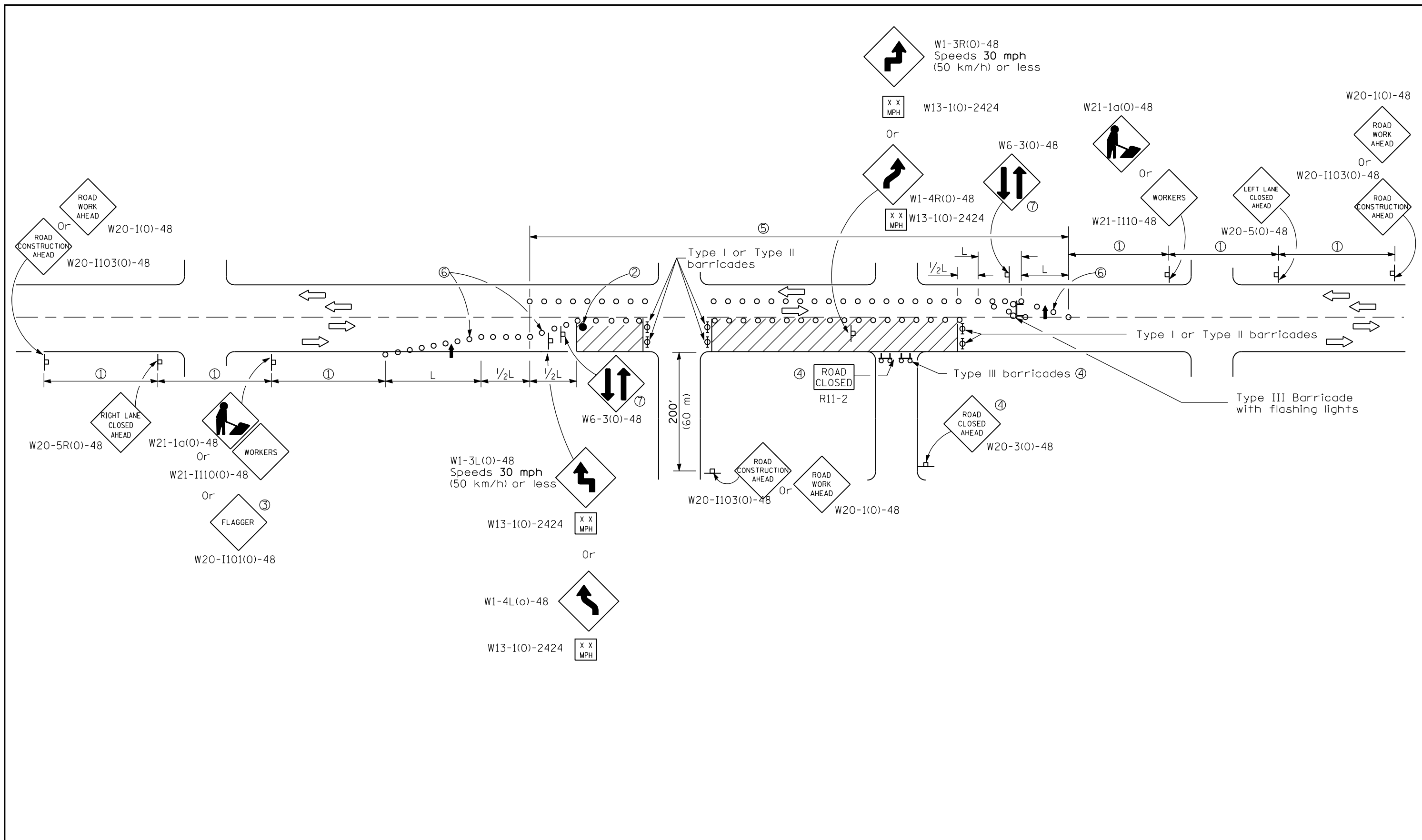
**STANDARD 701606-06**


Illinois Department of Transportation

APPROVED January 1, 2009  
ENGINEER OF OPERATIONS

APPROVED January 1, 2009  
ENGINEER OF DESIGN AND ENVIRONMENT

ISSUED 1-1-97



 Illinois Department of Transportation  
 APPROVED January 1, 2009  
 ENGINEER OF OPERATIONS  
 APPROVED January 1, 2009  
 ENGINEER OF DESIGN AND ENVIRONMENT

ISSUED 1-1-97

**URBAN LANE CLOSURE,  
 MULTILANE, 2W WITH  
 MOUNTABLE MEDIAN**  
 (Sheet 2 of 2)  
**STANDARD 701606-06**