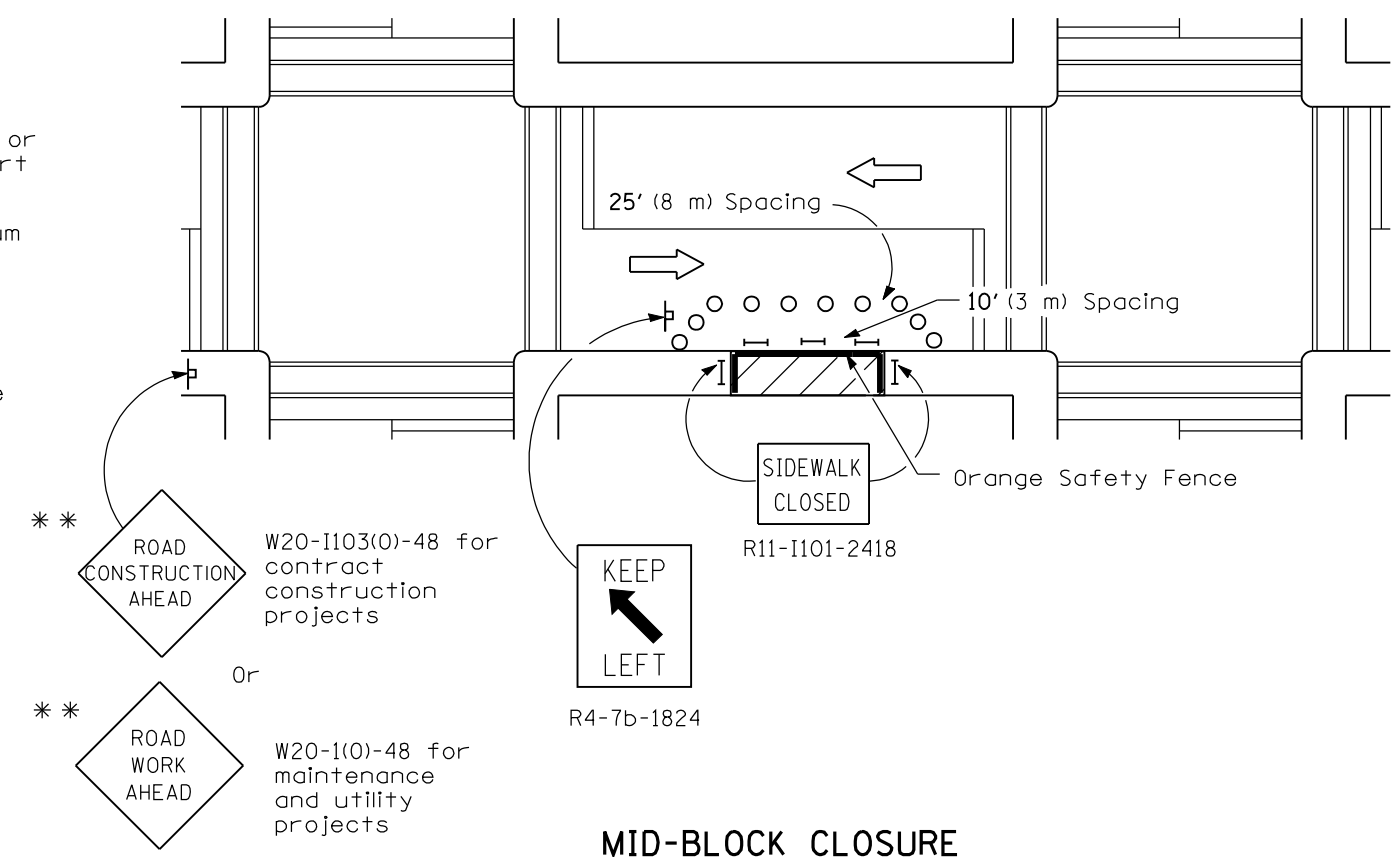


- SYMBOLS**
- Work area
  - Sign on portable or permanent support
  - Barricade or drum
  - Cone, drum or barricade
  - Type III barricade



**GENERAL NOTES**

Where, at any time, pedestrian traffic must be rerouted due to work being performed.

The SIDEWALK CLOSED / USE OTHER SIDE sign shall be placed at the nearest crosswalk or intersection to each end of the closure. Where the closure occurs at a corner, the signs shall be erected on the corners across the street from the closure. The SIDEWALK CLOSED signs shall be used at the ends of the actual closures.

Type III barricades and R11-2-4830 signs shall be positioned as shown in "ROAD CLOSED TO ALL TRAFFIC" detail on Standard 709001.

\* May be used when applicable

R11-I102-2430

\*\* Omit whenever duplicated by road work traffic control.

All dimensions are in inches (millimeters) unless otherwise shown.

DATE	REVISIONS
1-1-09	Switched units to English (metric), 702001 to 709001.
1-1-00	Revised Standard Title and KEEP LEFT sign number.

**LANE CLOSURE MULTILANE  
1W OR 2W CROSSWALK OR  
SIDEWALK CLOSURE**

**STANDARD 701801-04**

Illinois Department of Transportation

APPROVED January 1, 2009  
ENGINEER OF OPERATIONS

APPROVED January 1, 2009  
ENGINEER OF DESIGN AND ENVIRONMENT

ISSUED 1-1-97