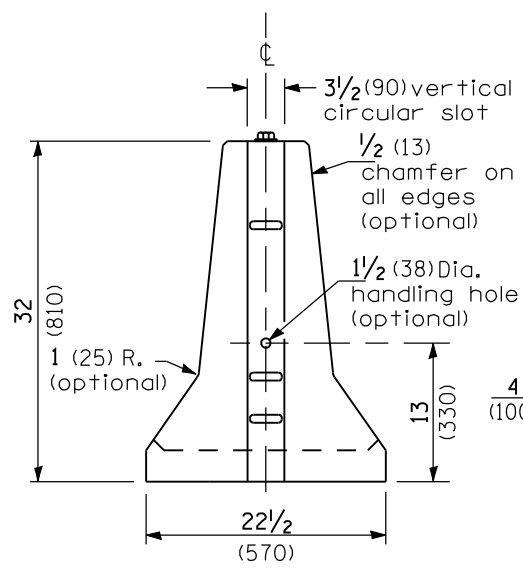
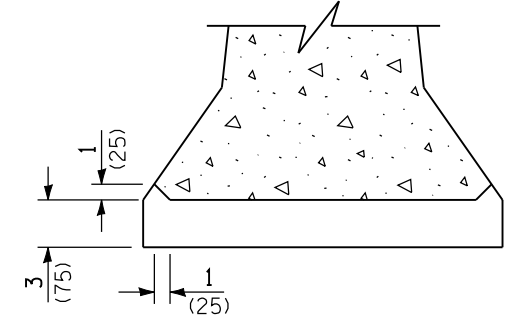


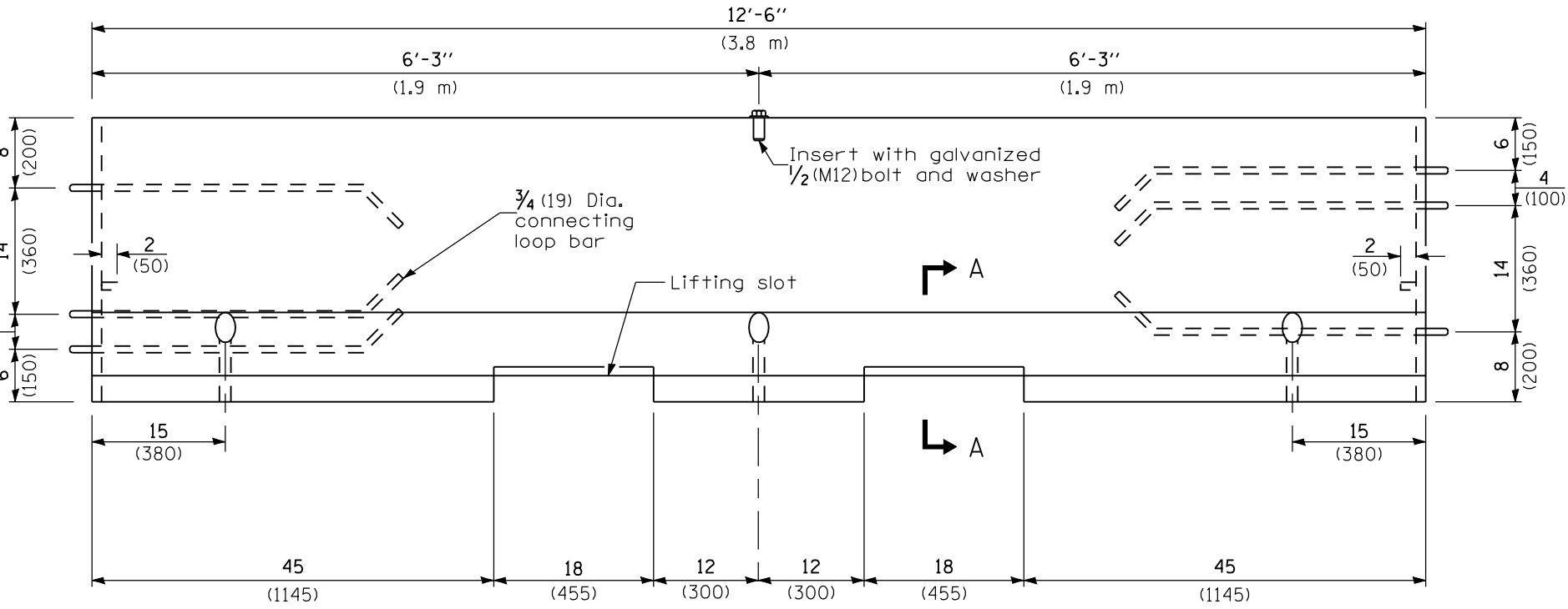
F SHAPE DESIGN



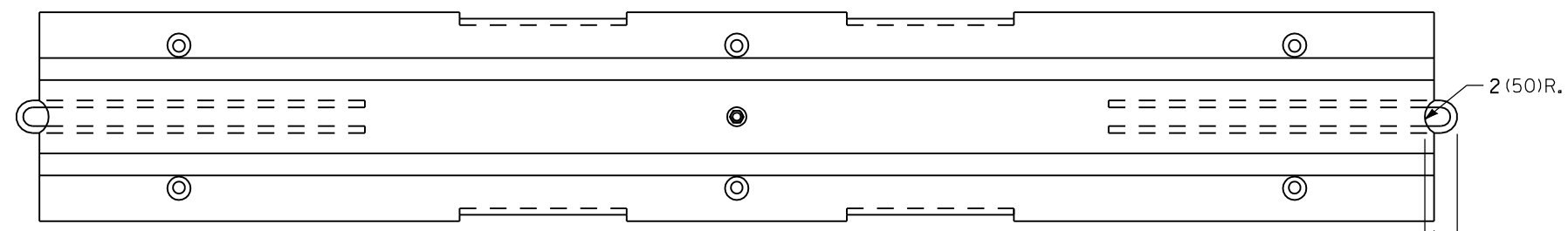
END VIEW
(Showing lifting slot)



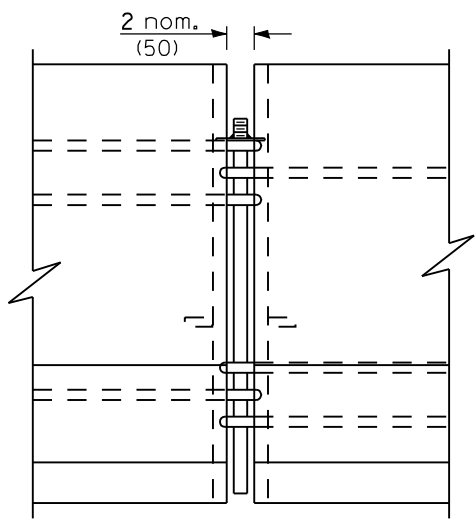
SECTION A-A
LIFTING SLOT



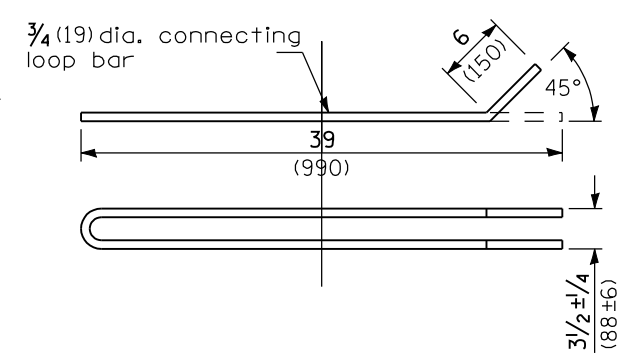
ELEVATION
(Showing connecting loop bars and vertical panel bolt/insert)



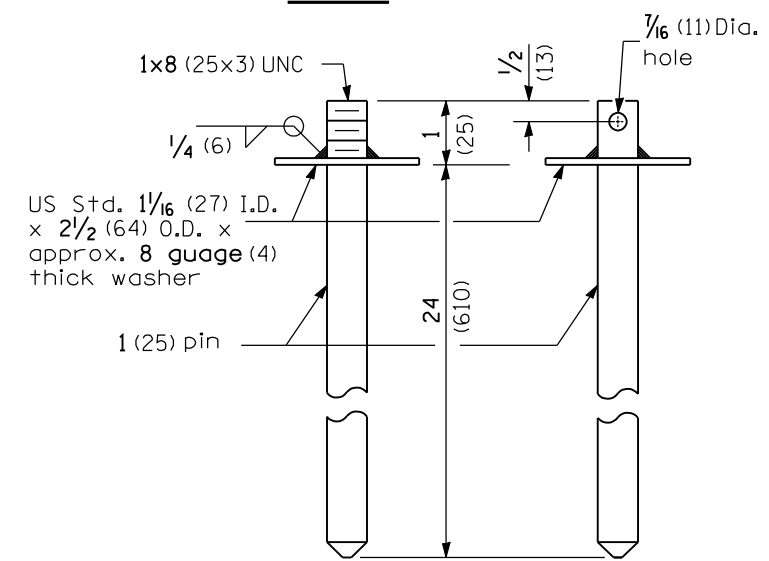
PLAN



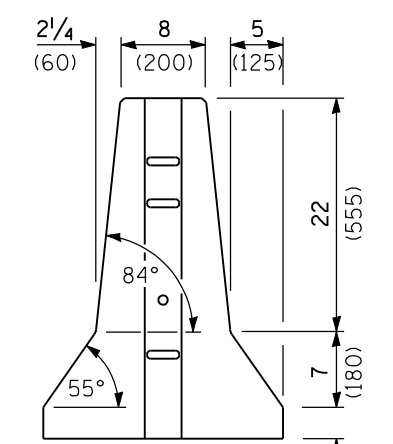
CONNECTING DETAIL



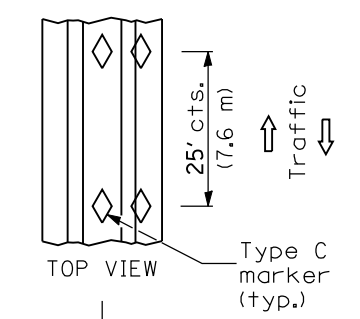
CONNECTING LOOP BAR



ALTERNATE CONNECTING AND ANCHOR PINS
(End may be beveled 1/4 (6) max.)



END VIEW



BARRIER WALL MARKERS

GENERAL NOTES

Each F shape barrier shall be clearly marked with "ILLINOIS F SHAPE", the Producer's mark and the date of manufacture. The markings shall be indented on the barrier or painted thereon with waterproof paint/ink.

The insert for the 1/2 (M12) bolt shall be capable of 3,000 lb (13 kN) pull-out strength.

When barrier separates opposing flows of traffic, markers shall be on both sides of barrier.

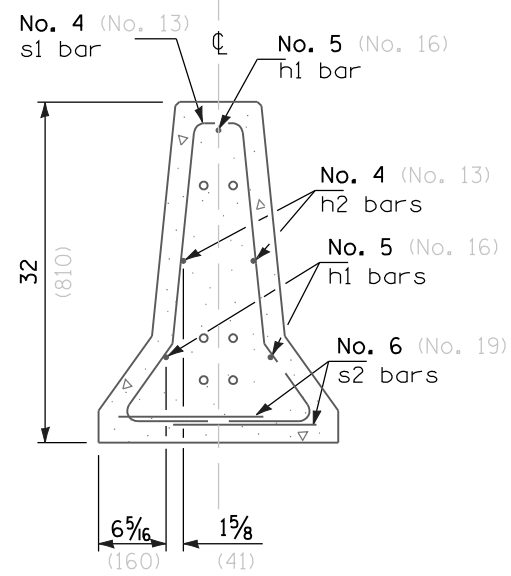
All dimensions are in inches (millimeters) unless otherwise shown.

Illinois Department of Transportation
 PASSED January 1, 2009
 ENGINEER OF POLICY AND PROCEDURES
 APPROVED January 1, 2009
 ENGINEER OF DESIGN AND ENVIRONMENT

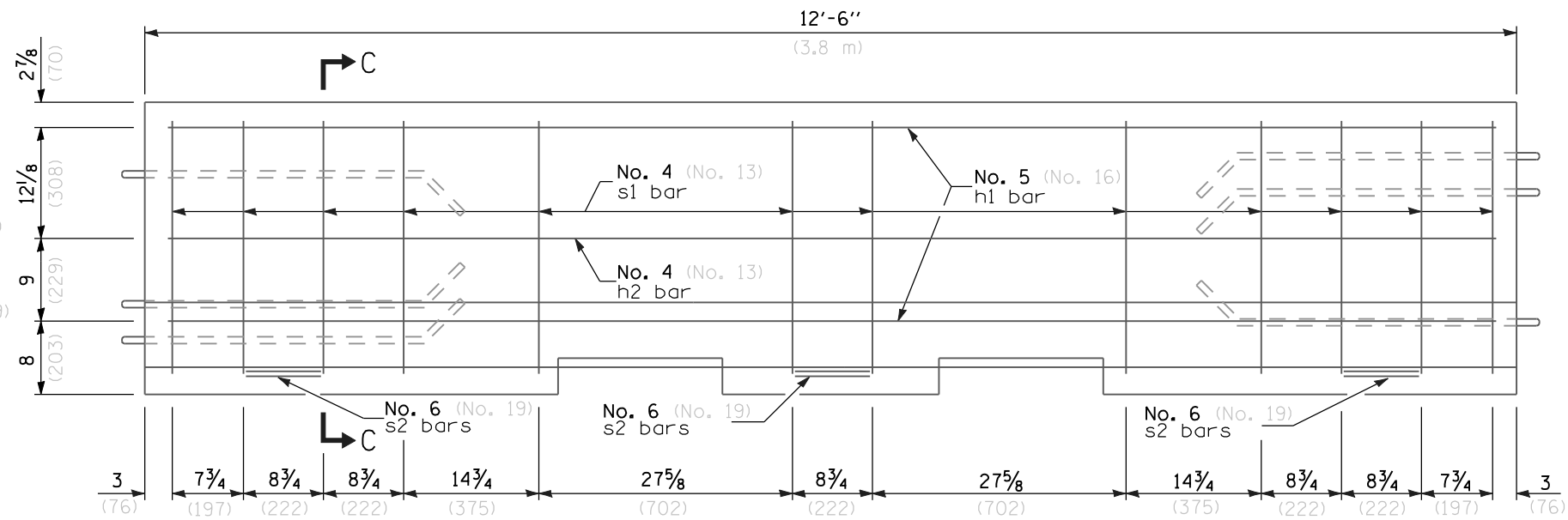
DATE	REVISIONS
1-1-09	Chg. s2 bar to No. 6 (No. 19), units to Eng. (met.). Rev. Gen. Notes.
1-1-08	Added Barrier Wall Markers detail.

TEMPORARY CONCRETE BARRIER
 (Sheet 1 of 2)
STANDARD 704001-05

F SHAPE DESIGN



SECTION C-C

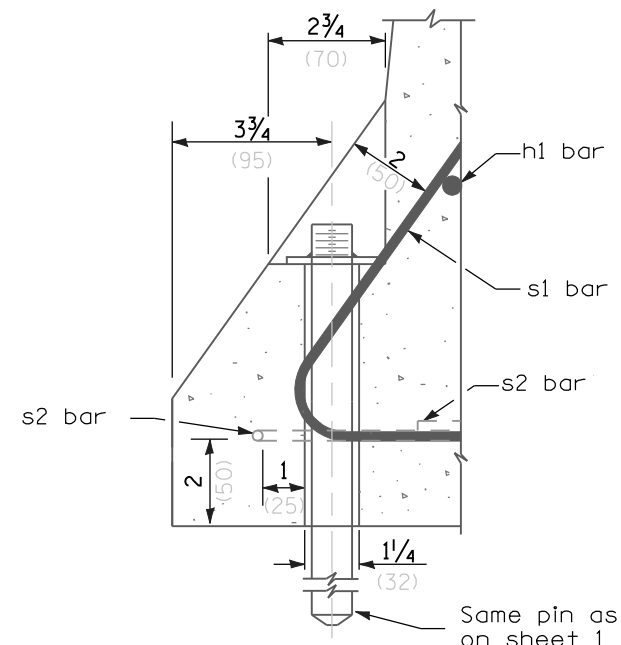


ELEVATION

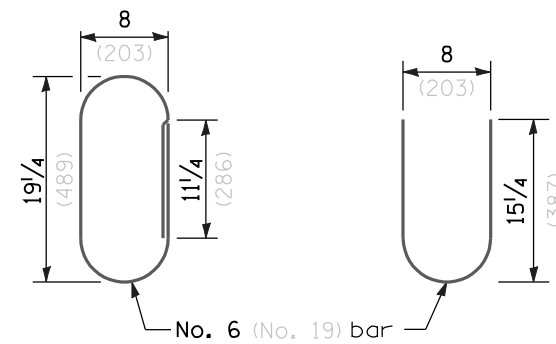
(Reinforcement)



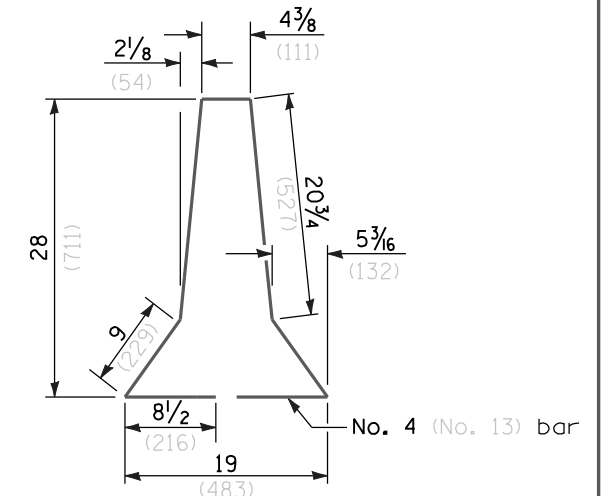
PLAN



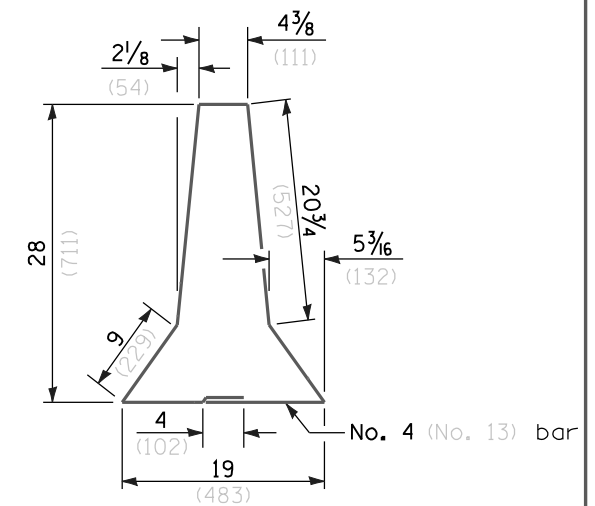
**SECTION B-B
ANCHORING DETAIL**



ALTERNATE s2 BARS



s1 BAR



ALTERNATE s1 BAR

Illinois Department of Transportation
 PASSED January 1, 2009
 ENGINEER OF POLICY AND PROCEDURES
 APPROVED January 1, 2009
 ENGINEER OF DESIGN AND ENVIRONMENT

TEMPORARY CONCRETE BARRIER
 (Sheet 2 of 2)
STANDARD 704001-05