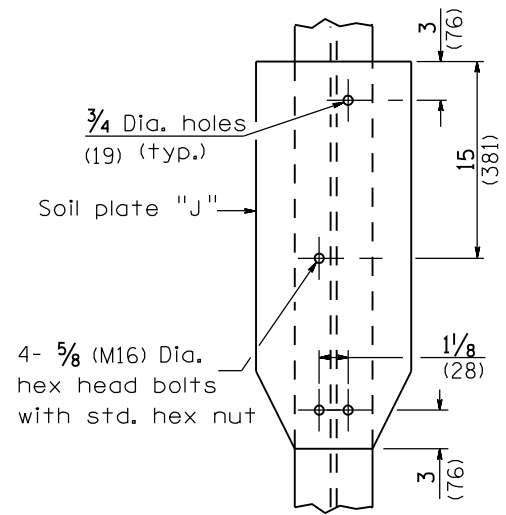
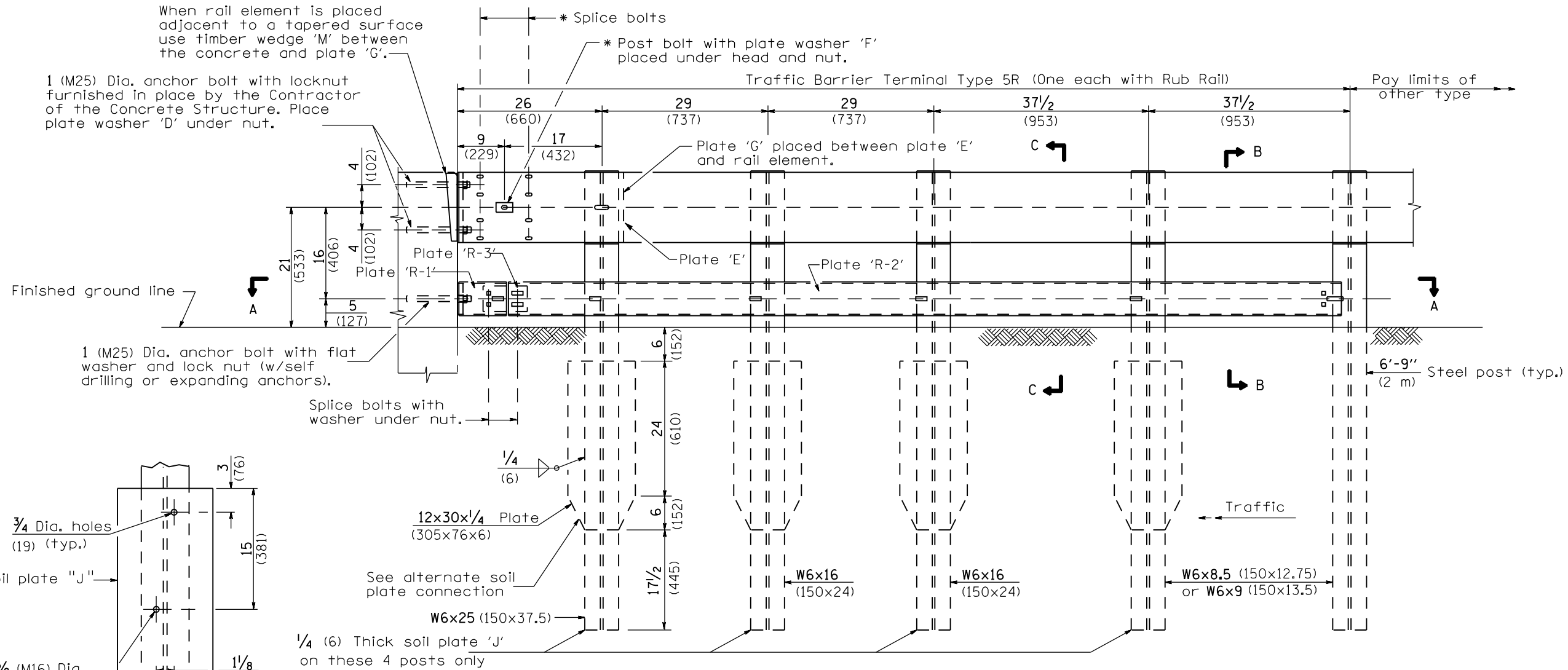
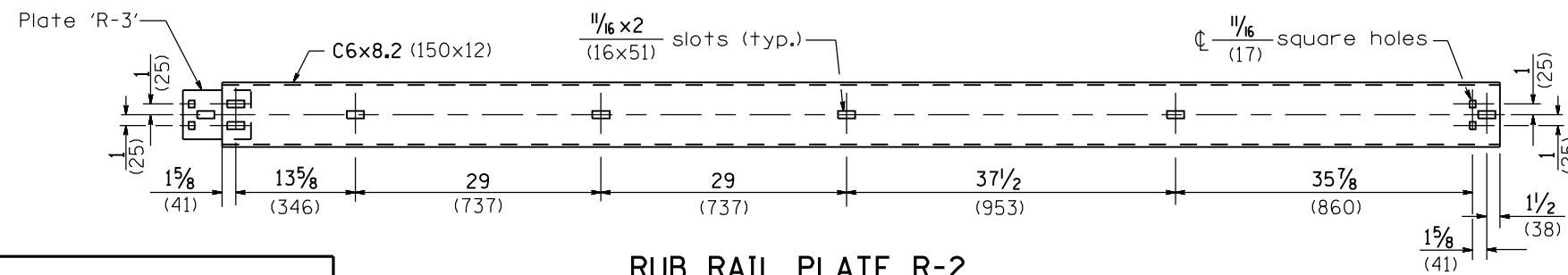
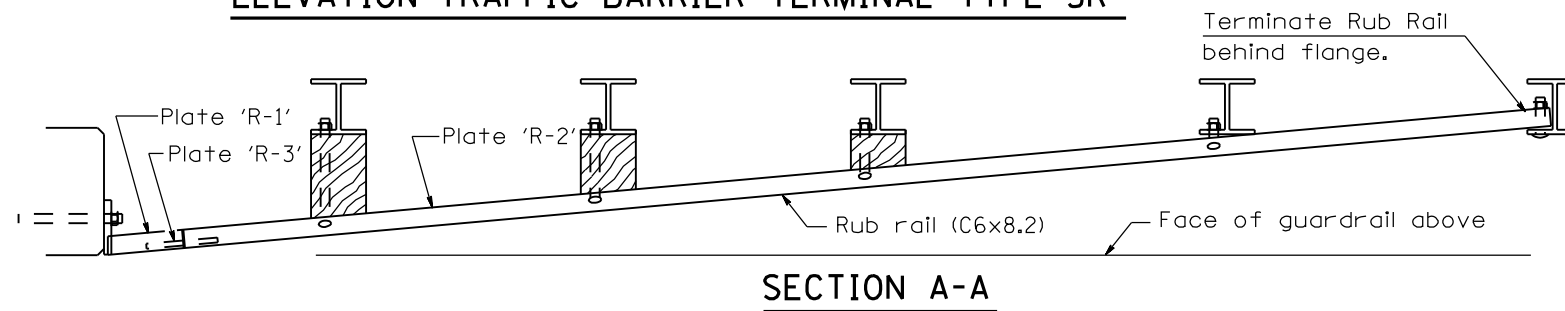


When rail element is placed adjacent to a tapered surface use timber wedge 'M' between the concrete and plate 'G'.

1 (M25) Dia. anchor bolt with locknut furnished in place by the Contractor of the Concrete Structure. Place plate washer 'D' under nut.



ELEVATION-TRAFFIC BARRIER TERMINAL TYPE 5R



GENERAL NOTES

- See Standard B.L.R. 26 for details of guardrail not shown.
- Install the face of the guardrail flush with the face of the parapet. Install plate washer "D" so that the 1 (25) projection fills the remainder of the slotted holes in the 1 (25) end plate on plate "G" after the 1 (25) bolts are in place.
- * When an expansion joint exists below the connector, bolts shall be provided with locknut or double nut and shall be tightened only to a point that will allow plate G to be free to move.
- All dimensions are in inches (millimeters) unless otherwise shown.

DATE	REVISIONS
1-1-09	Switched units to English (metric).
1-1-08	Revised General Notes, revised Plate Washer F.

TRAFFIC BARRIER TERMINAL-TYPE 5R
(Sheet 1 of 2)

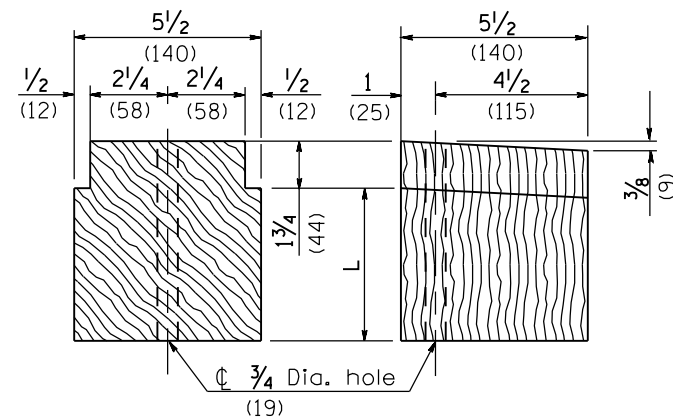
STANDARD B.L.R. 20-6

Illinois Department of Transportation

APPROVED January 1, 2009
Charles J. Russell
ENGINEER OF LOCAL ROADS AND STREETS

APPROVED January 1, 2009
Ken E. Han
ENGINEER OF DESIGN AND ENVIRONMENT

ISSUED 1-1-07

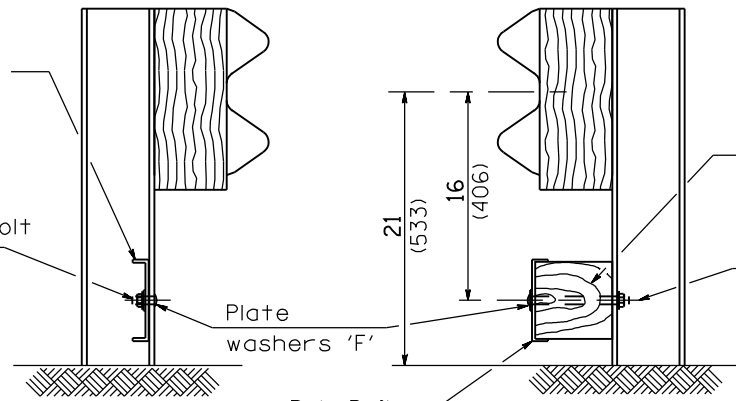


TREATED TIMBER BLOCKING

** Approximate Lengths Field Verify

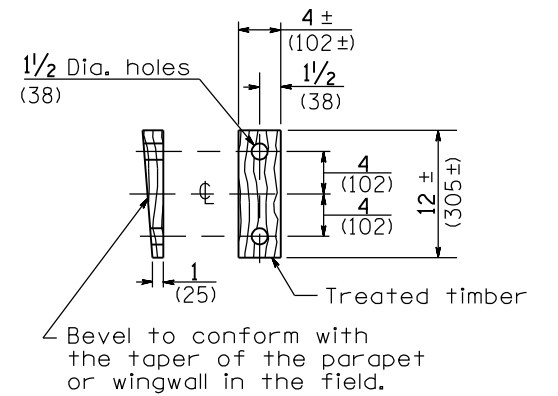
** L
7 3/8 (187)
5 5/8 (143)
3 7/8 (98)

Terminate Rub Rail behind flange
 5/8 (16) Dia. post bolt with 3/4 (19) Dia. hole in post

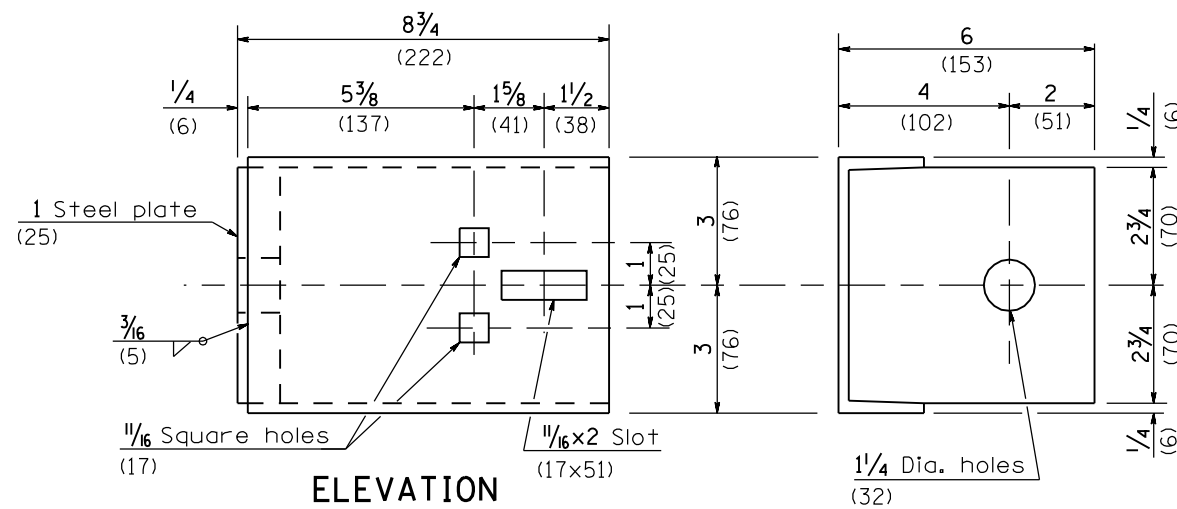


SECTION B-B

SECTION C-C

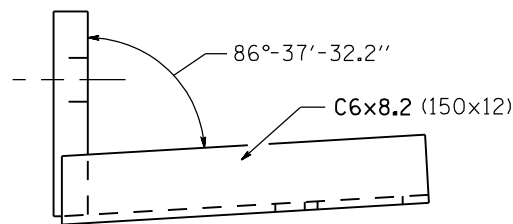


WEDGE M



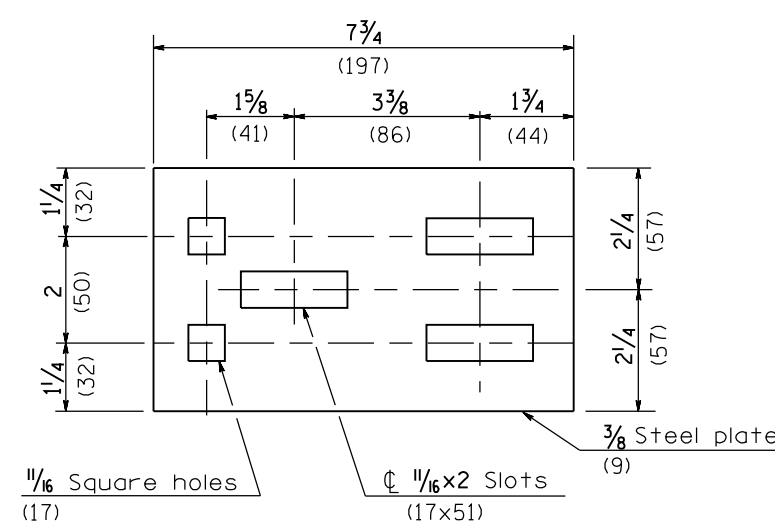
ELEVATION

END VIEW



PLAN

RUB RAIL PLATE R-1



SPLICE PLATE 'R-3'

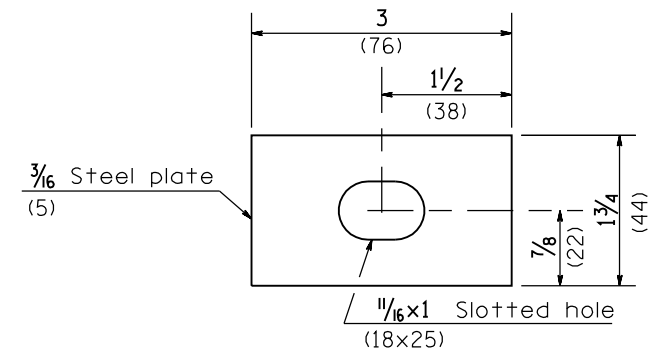


PLATE WASHER F

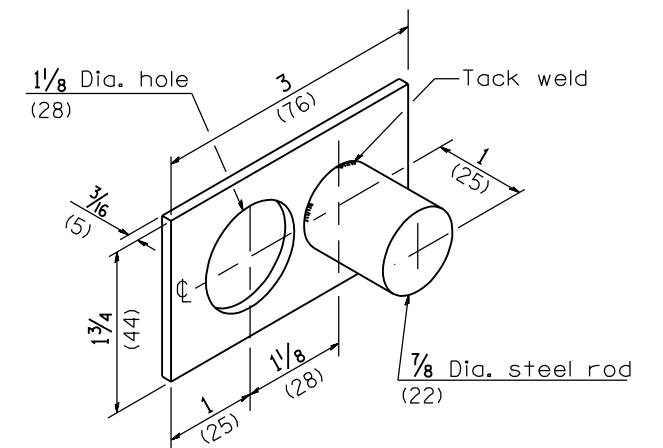


PLATE WASHER D

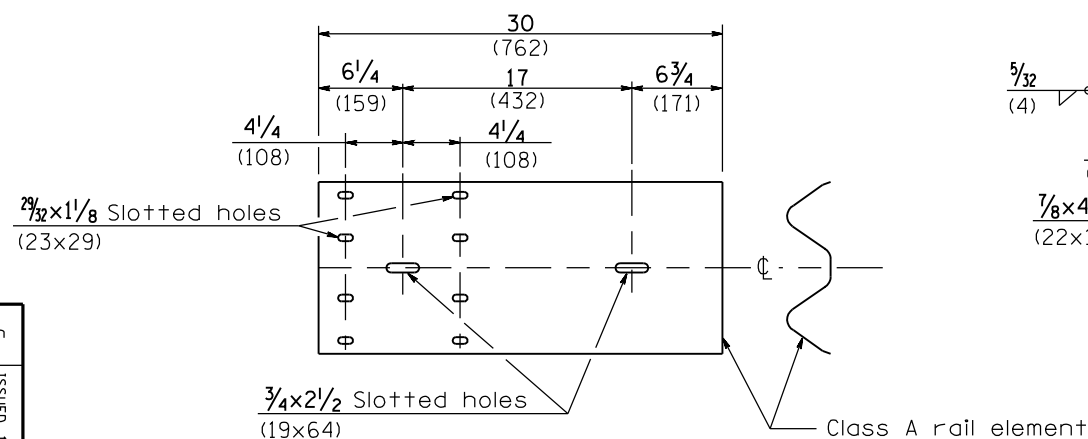


PLATE E

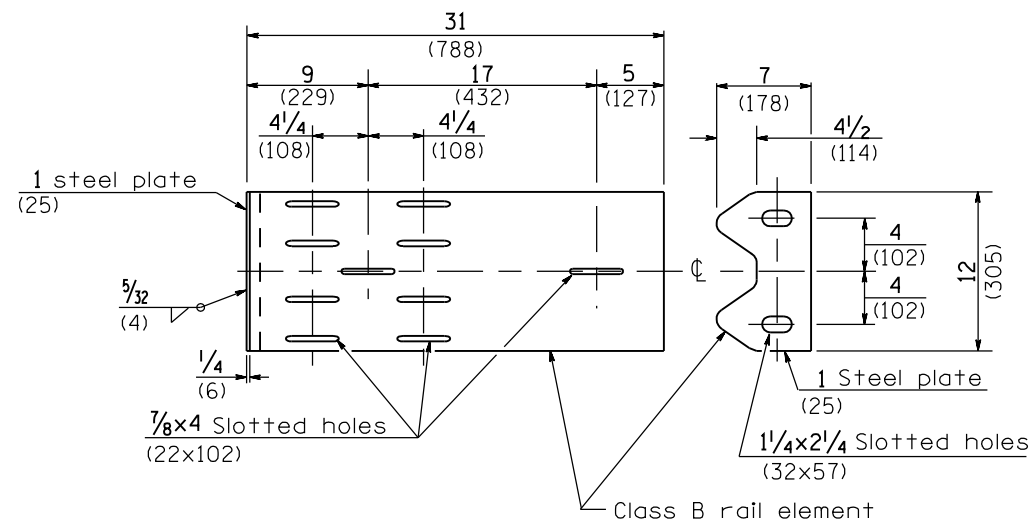


PLATE G

Illinois Department of Transportation
 APPROVED January 1, 2009
 Charles J. D. [Signature]
 ENGINEER OF LOCAL ROADS AND STREETS
 APPROVED January 1, 2009
 [Signature]
 ENGINEER OF DESIGN AND ENVIRONMENT

**TRAFFIC BARRIER
 TERMINAL-TYPE 5R**
 (Sheet 2 of 2)
STANDARD B.L.R. 20-6