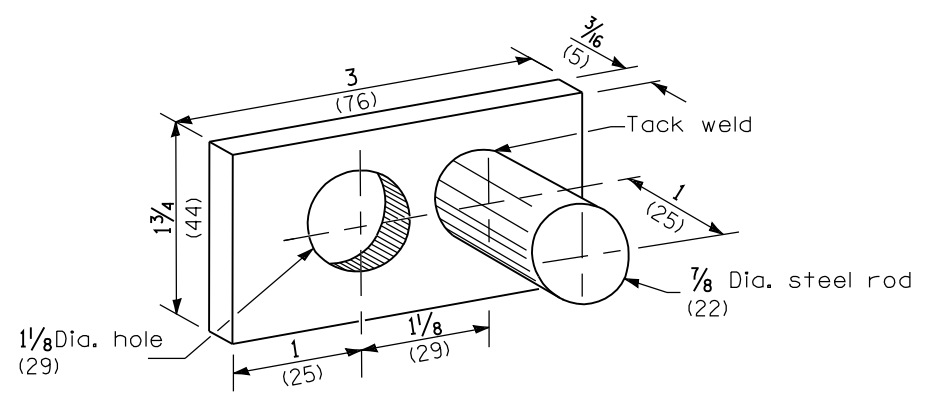
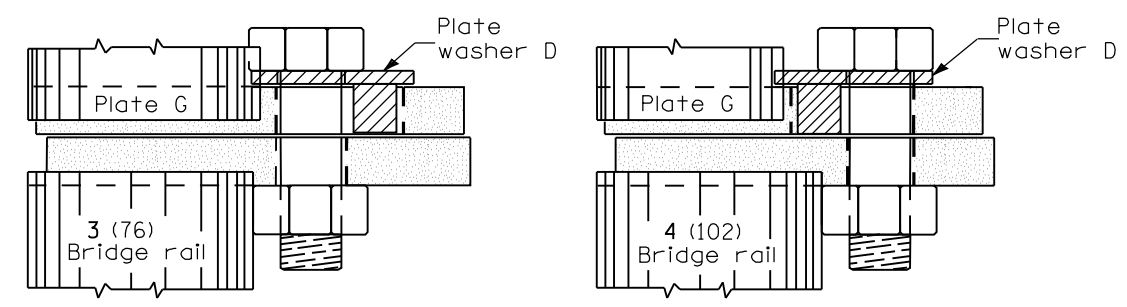


**TYPE 5A - STEEL BRIDGE RAIL**

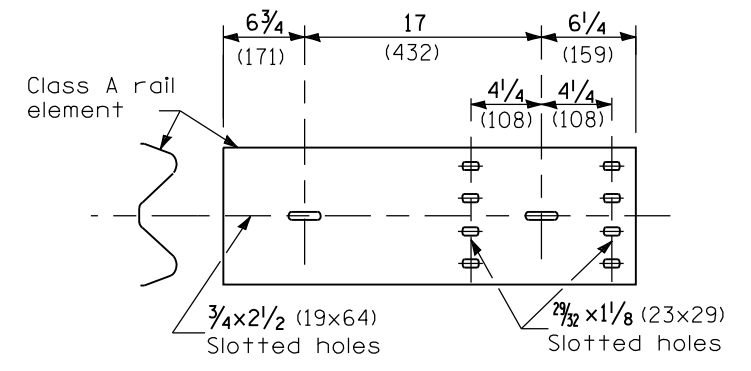


**PLATE WASHER D**

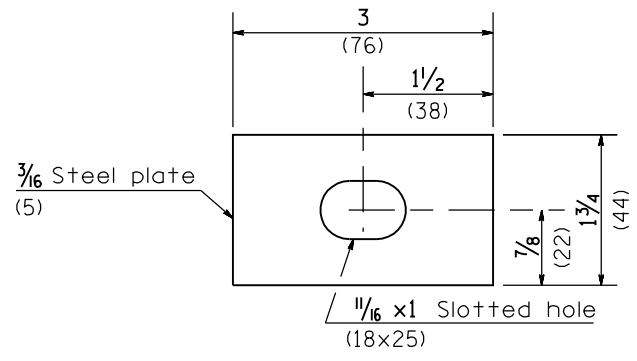


**PLACEMENT OF PLATE WASHER D**

(PLAN)



**PLATE E**



**PLATE WASHER F**

**GENERAL NOTES**

- See Standard B.L.R. 26 for details of guardrail not shown.
- Install plate washer D so the 1 (25) projection fills the remainder of the slotted holes in the 1 (25) end plate on plate G after the 1 (M24) dia. bolts are in place.
- \* When an expansion joint exists below the connector, bolts shall be provided with a locknut or double nuts and shall be tightened only to a point that will allow plate G to be free to move.
- The face of the guardrail shall be installed flush with the face of the bridge rail.
- When this terminal is used with Standard 630001, the guardrail shall transition down to the height of the terminal.
- All dimensions are in inches (millimeters) unless otherwise shown.

Illinois Department of Transportation

APPROVED January 1, 2009  
*Charles J. Russell*  
 ENGINEER OF LOCAL ROADS AND STREETS

APPROVED January 1, 2009  
*Ken E. Han*  
 ENGINEER OF DESIGN AND ENVIRONMENT

ISSUED 1-1-08

DATE	REVISIONS
1-1-09	Switched units to English (metric).
1-1-08	New Standard. Was part of Std. 631026 prior to January 1, 2007.

**TRAFFIC BARRIER  
 TERMINAL TYPE 5A**

**STANDARD B.L.R. 27-1**