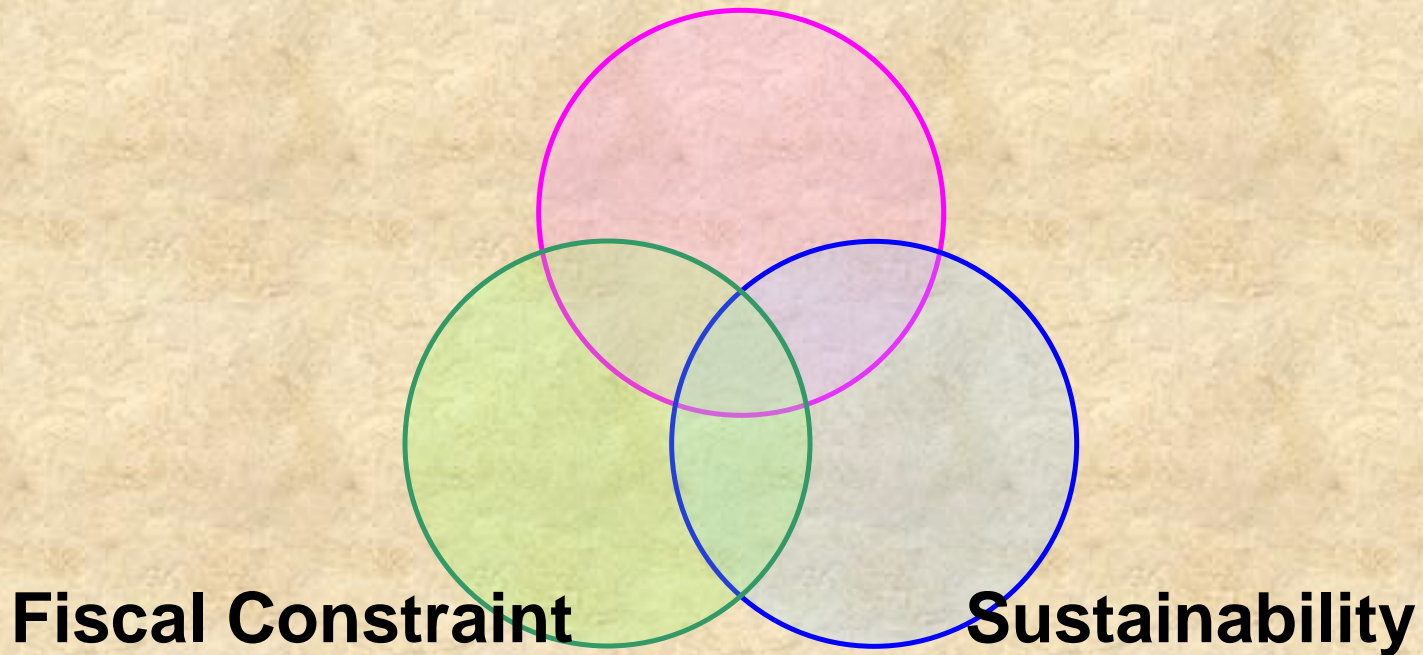


What's Next?


“Make No Little Plans”



Norm Stoner – FHWA; Illinois Division
October 14, 2009 - Chicago

Daniel Burnham:

- “Isolated communities lack those social and commercial advantages which arise from easy communication one with another....”
- “While good highways are of great value to the terminal cities, they are of even greater value to the outlying towns, and of greatest value to the farming communities through which they pass.”

A faded architectural drawing of a city grid, possibly a street plan or a site plan, is shown in the background. The drawing features a complex network of lines representing streets and buildings, with a large circle overlaid on the lower half of the image. The text is centered over the drawing.

**Is it possible to make of
“Big Plans” today?**

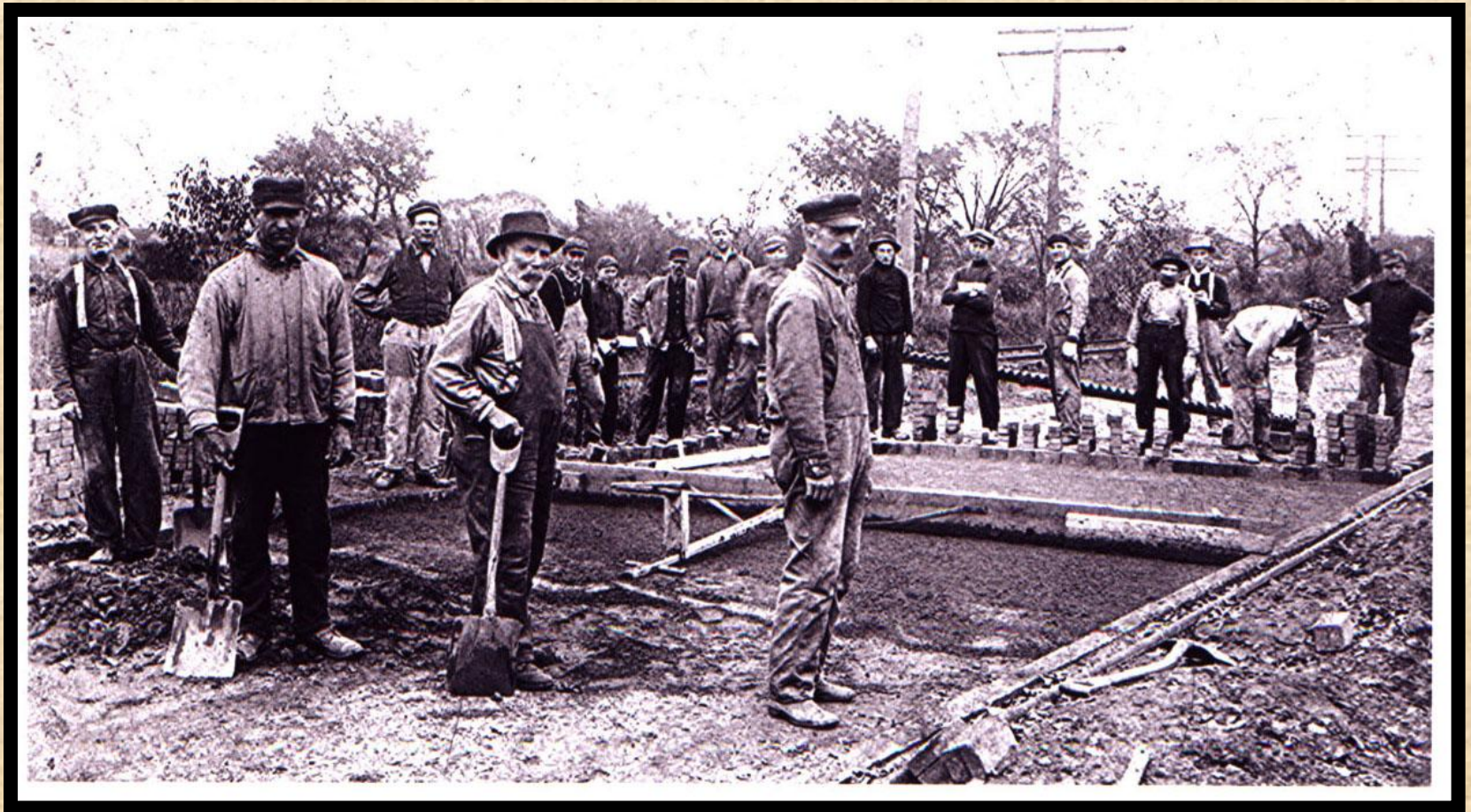
Regaining The Public's Trust



- A Refreshed Compelling National Vision
- Strengthen the Linkage with the User
- Smarter, Objective Decision Making

Regaining The Public's Trust

- A Refreshed Compelling National Vision




Regaining The Public's Trust

- A Refreshed Compelling National Vision
- Strengthen the Linkage with the User
- Smarter, Objective Decision Making

Principles for a Sustainable Communities

- **Provide more transportation choices**
- **Promote equitable, affordable housing**
- **Enhance economic competitiveness**
- **Support existing communities**
- **Coordinate policies & leverage investment**
- **Value communities and neighborhoods**

A faded architectural drawing of a city grid, possibly a street plan or a site plan, is shown in the background. The drawing features a complex network of lines representing streets and buildings, with a large circle overlaid on the lower half of the image. The text is centered over the drawing.

**Is it possible to make of
“Big Plans” today?**

