

Sustainability Planning in Central Illinois

Creating a shared vision for an enduring
Brilliant. Bright. Community.



Regional Sustainability Planning

- Background
- Program Goals
- Program
Components



Sustainable Communities Regional Planning Program

- US. Housing and Urban Development (HUD) : Office of Sustainable Housing and Communities
- Regional planning for economic competitiveness and revitalization of a community.
- Land use, environment, transportation, economic development, availability of food, housing, art and culture.

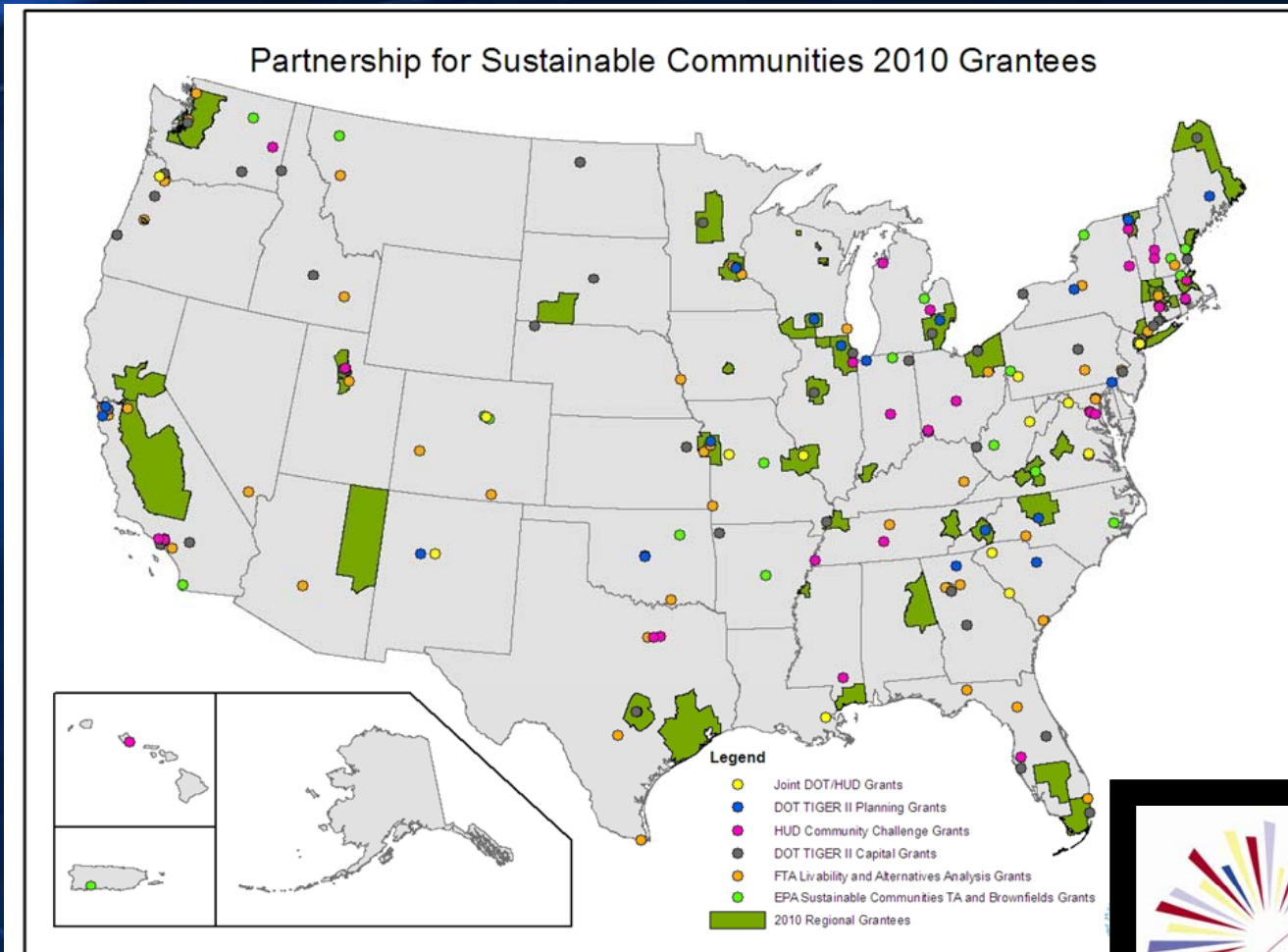


Federal Partnership for Sustainability-Livability Principles

- Provide more transportation choices.
- Promote equitable, affordable housing.
- Enhance economic competitiveness.
- Support existing communities.
- Coordinate and leverage federal policies and investment.
- Value communities and neighborhoods.



Partnership for Sustainable Communities



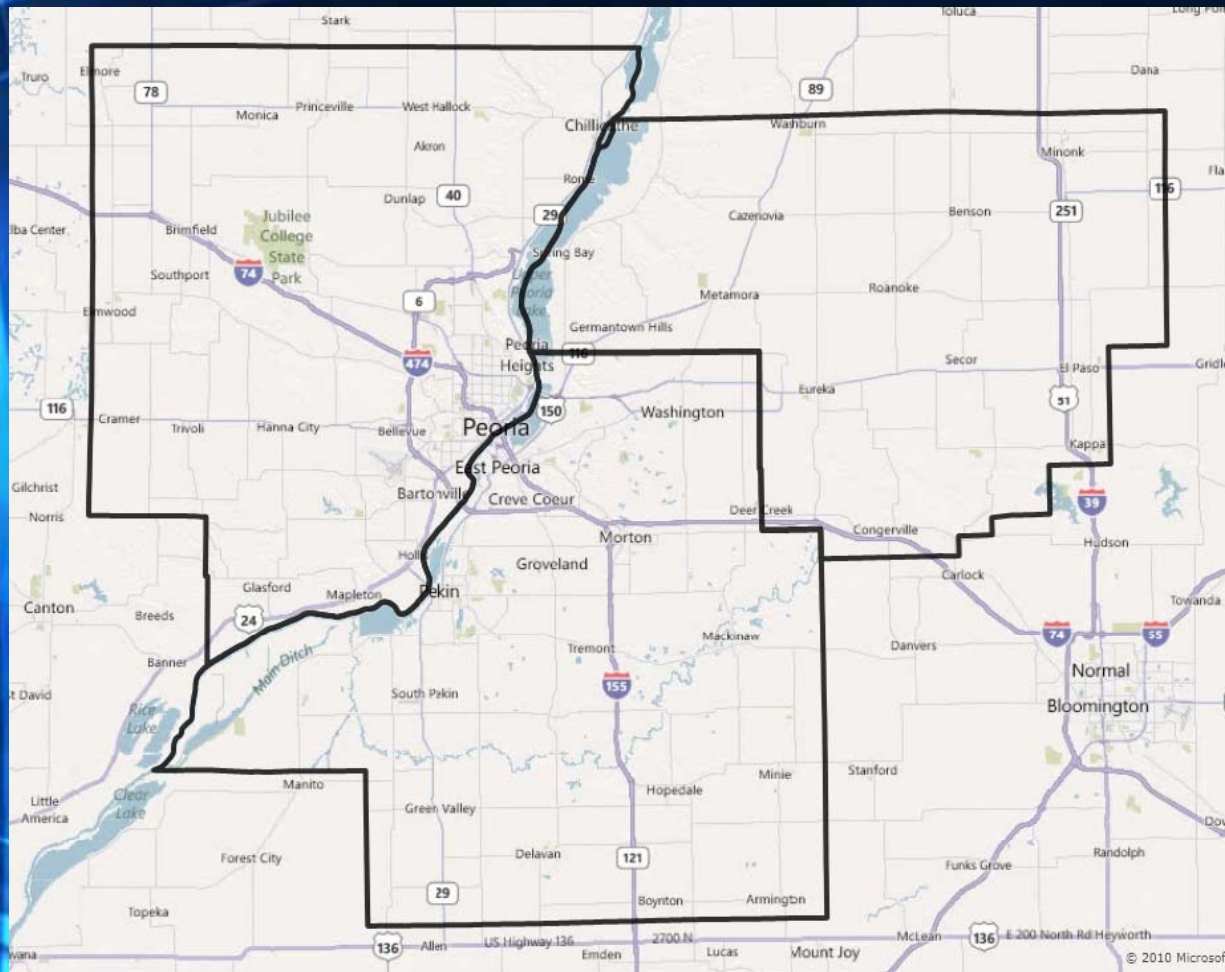
Define Sustainable

- **15. *Sustainable Communities*.** The term —sustainable communities refers to urban, suburban, and rural places that successfully integrate housing, land use, economic and workforce development, transportation, and infrastructure investments in a manner that empowers jurisdictions to consider the interdependent challenges of: 1) economic competitiveness and revitalization; 2) social equity, inclusion, and access to opportunity; 3) energy use and climate change; and 4) public health and environmental impact.

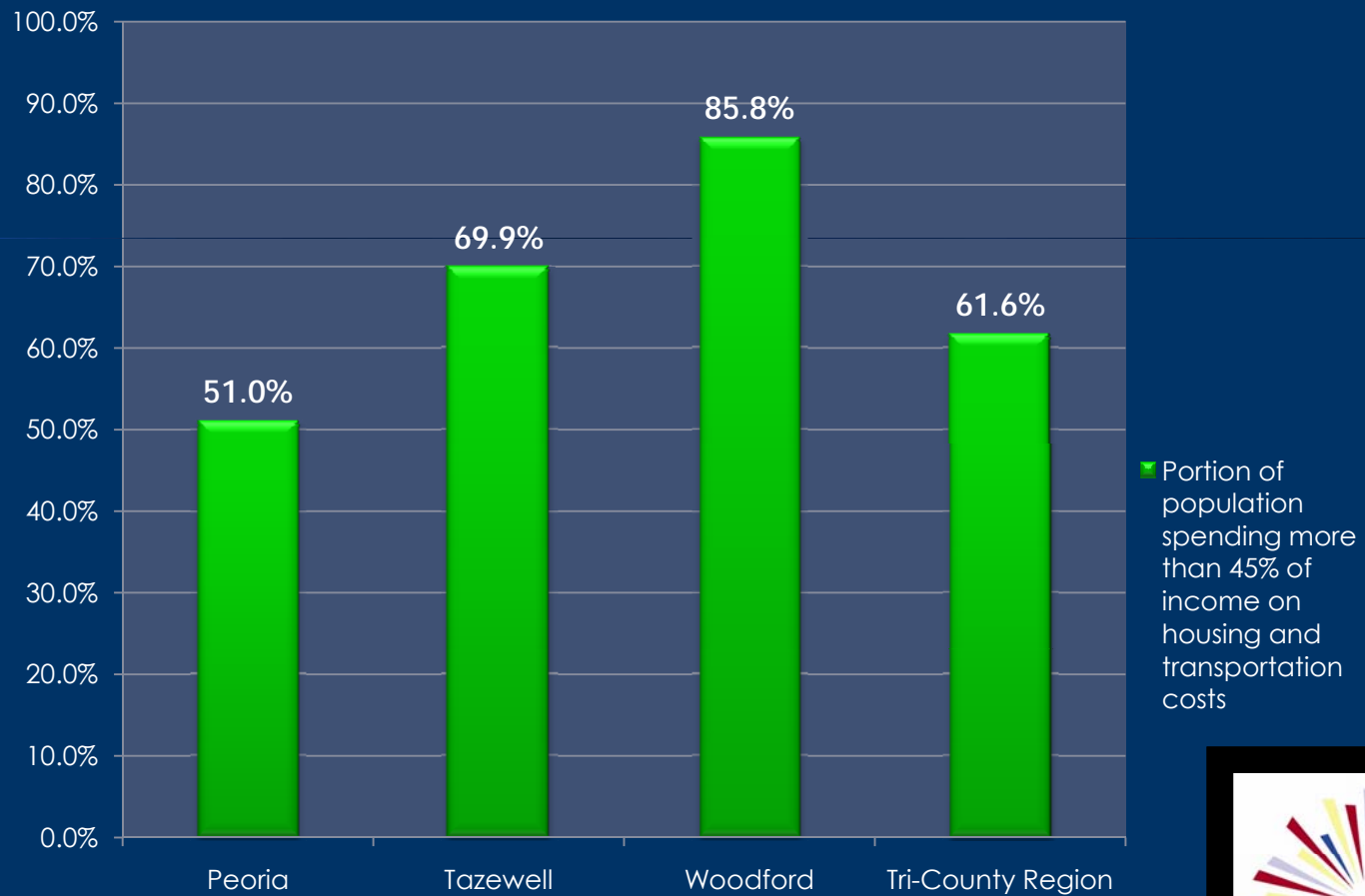
Define Sustainable

- Ability to ENDURE

Geographic Scope



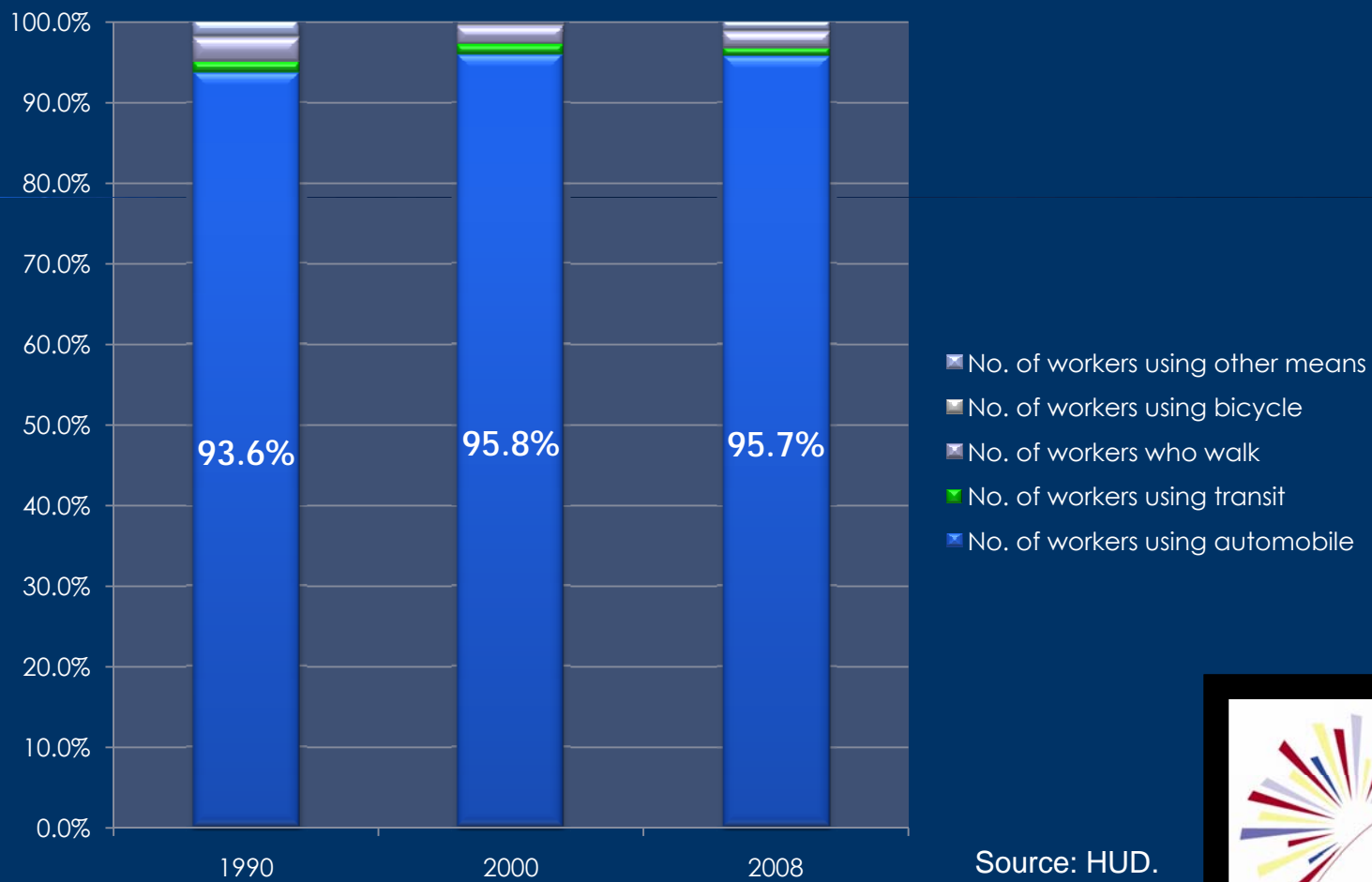
Housing and Transportation Costs



Source: Center for Neighborhood Technology Housing + Transportation Affordability Index.



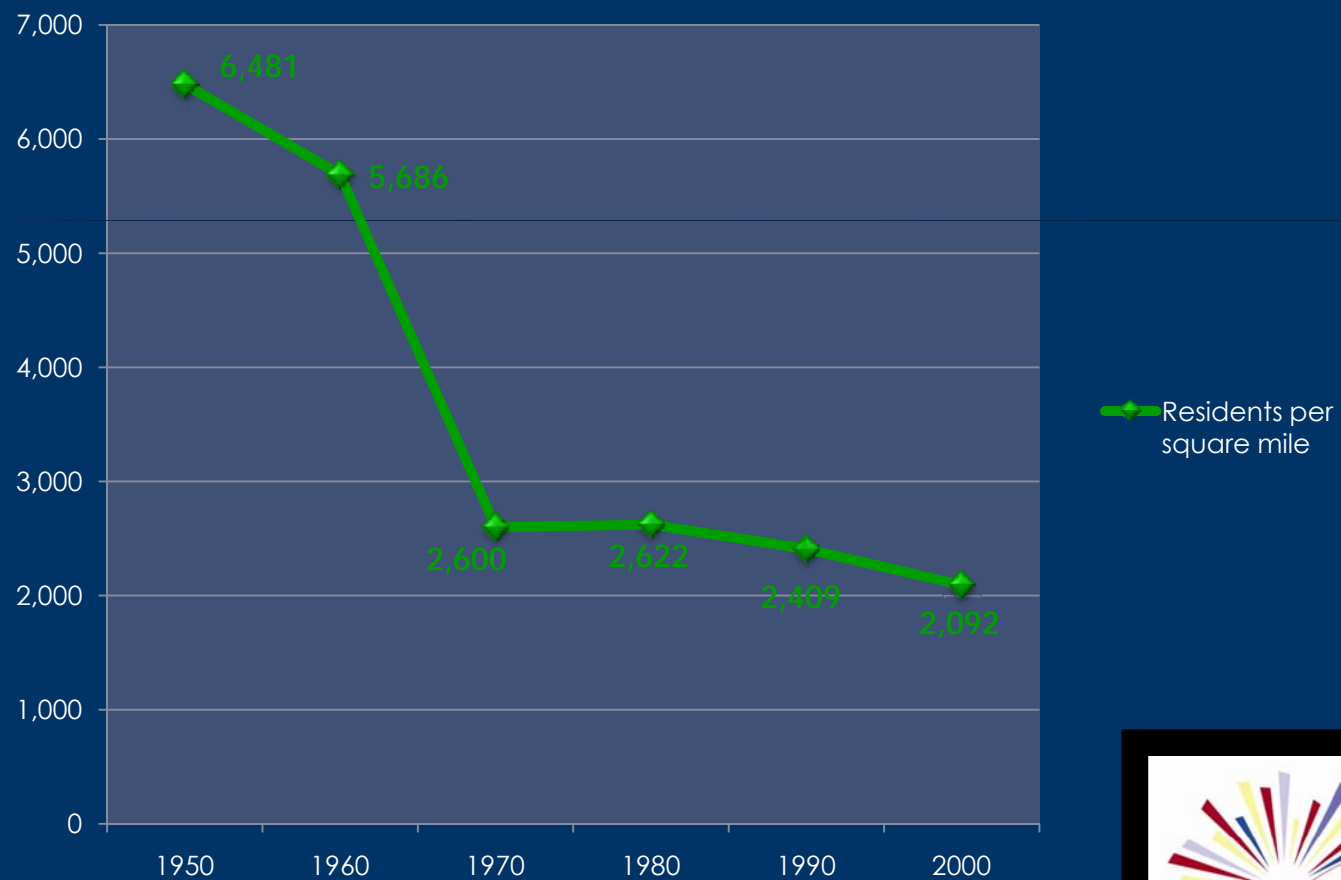
Work Commute



Source: HUD.



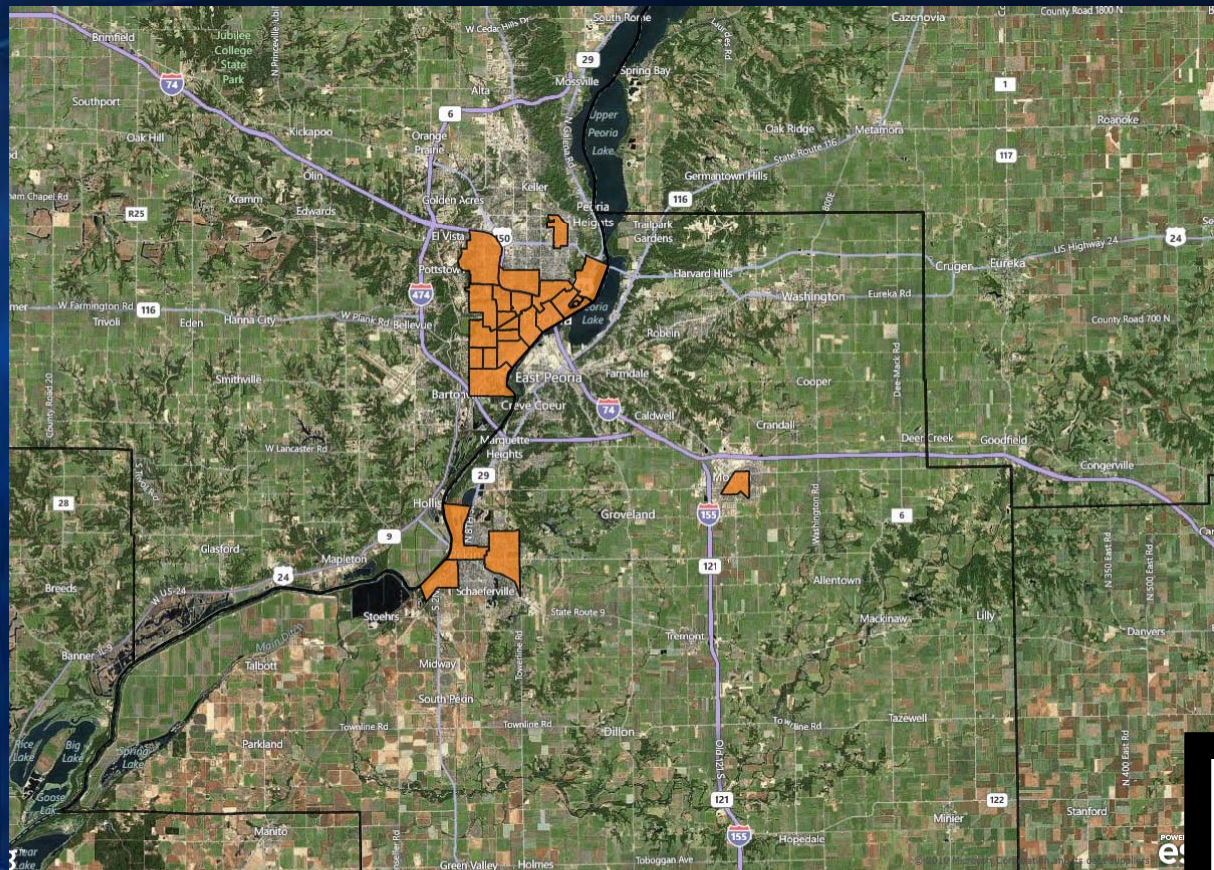
Population Density



Source: Peoria County Comprehensive Land Use Plan. Data for Peoria, Peoria Heights, Bartonville and Chillicothe only.



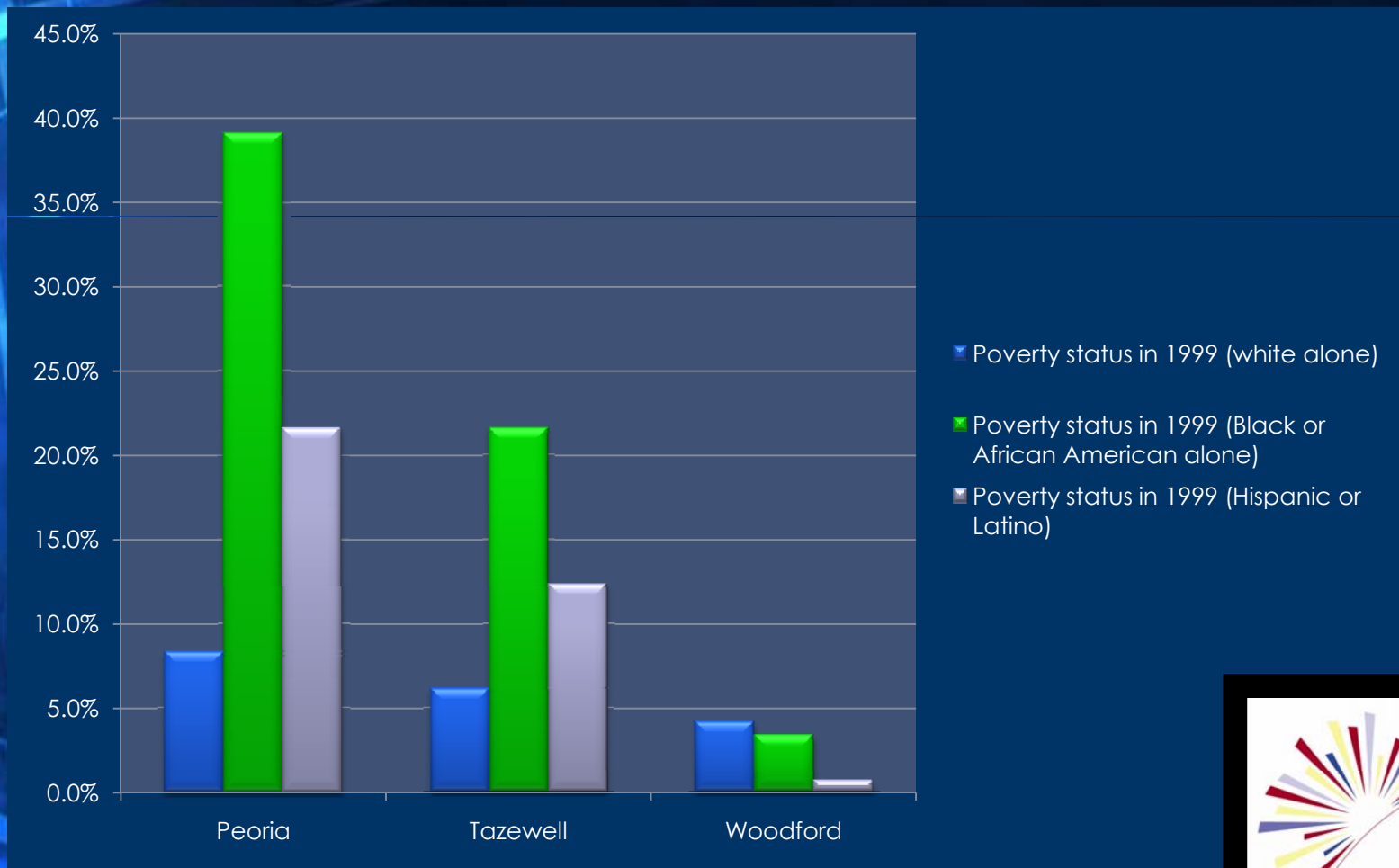
Census tracts with % poverty greater than national average



Source: American Community Survey Five Year Estimates 2005-2009.



Poverty and Race/Ethnicity



Program Goals – Livability Principles

- Provide more transportation choices.
- Promote equitable, affordable housing.
- Enhance economic competitiveness.
- Support existing communities.
- Coordinate and leverage federal policies and investment.
- Value communities and neighborhoods.
- *Facilitate strong alliances of residents and regional interest groups to maintain a long term vision.*



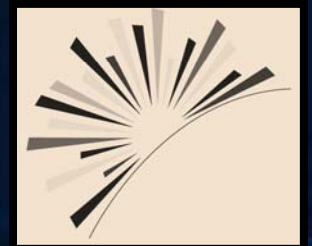
Heart of IL Sustainability Consortium

- Peoria Park District – Youth and Outreach Intervention Program
- Economic Development Council for Central Illinois
- Peoria County
- Illinois Central College
- Arts Partners of Central Illinois
- Peoria Opportunities Foundation
- Peoria Housing Authority
- City of Peoria
- Heart of Illinois Continuum of Care
- Tri-County Regional Planning Commission
- Illinois River Valley Council of Governments



Consortium: Set the framework, Outreach.

- Info Session
- Surveys
- Listening Sessions
- Visioning sessions/charrettes
- Video blogs
- Facebook – Brilliant. Bright. Community.
- Visual Engagement



Program Components

- Economic Development
 - Utilize un/under-employed residents
 - Business Incubator



Program Components

- Economic Development
- Housing
 - Location-efficient
 - Affordable



Program Components

- Economic Development
- Housing
- Arts & Culture
 - Integrate infrastructure, urban design, & public art
 - Create beautiful, functional public spaces



Program Components

- Economic Development
- Housing
- Arts & Culture
- Agriculture & Food
 - Access
 - Local Food



Program Components

- Economic Development
- Housing
- Arts & Culture
- Agriculture & Food
- Cost of Community Services model
 - Current & Future Costs



Program Components

- Economic Development
- Housing
- Arts & Culture
- Agriculture & Food
- Cost of Community Services model
- Livability Index
 - Neighborhood-specific
 - Suggested Improvements





**Brilliant.
Bright.
Community.**