

Section 9: Improvements Mapping Help and Guide

Summary: It is important to be able to visually represent both the safe school travel routes you identify, as well as the kinds of infrastructure changes you plan to implement. The online Plan allows you to pull up a map of your school and the vicinity with a 2-mile radius. You will essentially be able to “draw” in all that you plan to do with regard to infrastructure improvements.

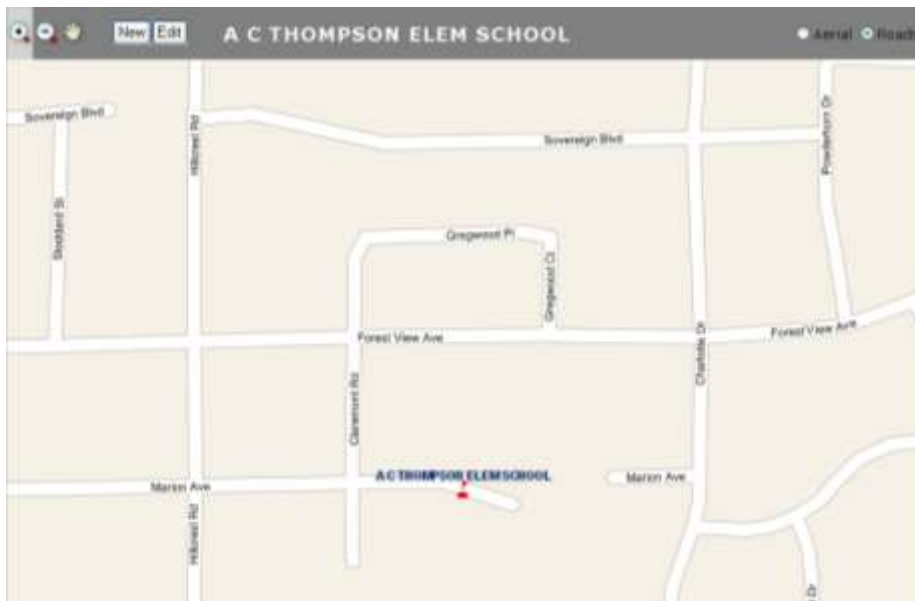
If your Plan seeks to outline infrastructure improvements at multiple locations, you must create a separate map for each site. You can record planned improvements to as many locations as are indicated by your Plan’s scope.

Tips on completing this section: You may need the assistance of a professional traffic engineer or planner to help you plan for more in-depth infrastructure projects. Be sure to contact your local jurisdictional transportation office (municipal, county, regional) and seek their involvement and approval of your improvements map.

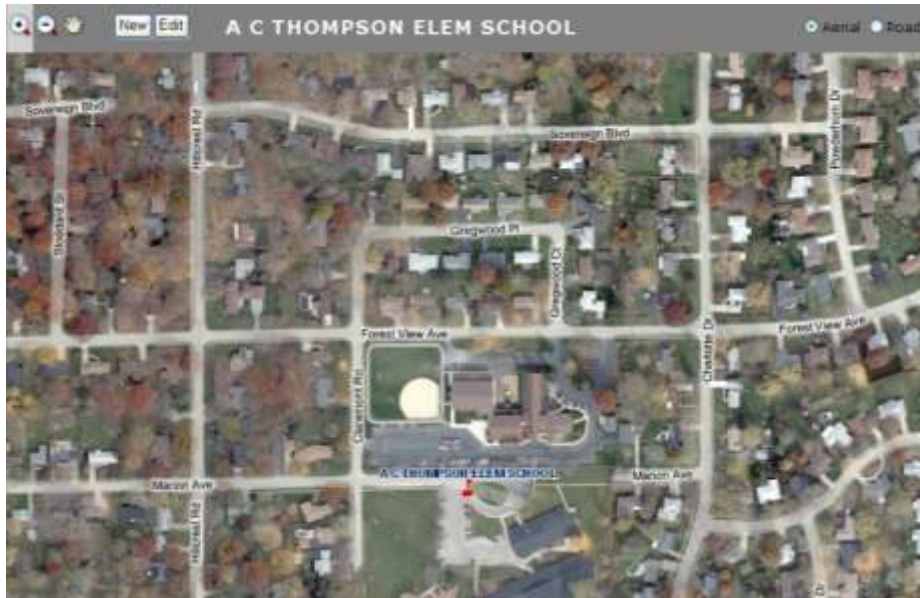
What to include: There are both **required** and **optional** elements for your improvements map: The directions for completing this section are detailed on the screen.

Steps to Complete a Map:

1. Select the school from the dropdown for which the improvement is planned.
2. Click the view the map button. A map will load (it might take a minute for the map to load).



Map Showing the Road View



Map Showing the Aerial View


Note: To view the map in Aerial mode click the Aerial button at the top right.

3. Once the map loads, there are two options (or buttons). One is New and another is Edit. To add new improvements or features to the map click the New button.

4. You will get a form where you can enter the information on the feature you are adding:

A form with four numbered input fields. Fields 1, 2, and 3 are dropdown menus, each containing the text 'Make a Selection'. Field 4 is a large text area. At the bottom of the form are two buttons: 'Go' and 'Cancel'.

5. Select the type of feature you are adding to the map. There are two main types of features: Point Features and Line Features. An example of a point feature is a stop sign, while an example of a line feature could be a bike route.

6. After selecting the features and entering a description (items 1 through 4) click the  button to activate the drawing tool on the map.

7. The map will now display with a set of buttons at the top. To determine the function of the button, locate the pointer of your mouse over it. To select the feature you want to use, click the appropriate button.

- Click the **Point** button when you want to add a point feature.
- Click the **Line** button when you want to add a line.
- Click **Cancel** to cancel the addition of a feature.

- Click the **Close** button after you have added the feature.

Listed below are the feature groupings with their associated types:



Line Button

Line Features

Bike Lane
Route



Point Button

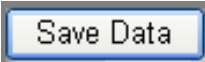
Point Features

Off-Street Bike and Pedestrian Facilities
On-Street Bicycle Facilities
Pedestrian and Bicycle Crossing Improvements
Sidewalk Improvements
Traffic Calming and Speed Reduction
Traffic Control Devices


8. Before drawing a feature on the map, make sure you are zoomed in or out to show the entire area on which the feature will be located on. You can navigate around the map using the controls at the top left corner.

9. This example will use a line feature. After clicking the line tool, your cursor will turn into a cross when you move over the map. To add the line to the map or display where the bike lane is to be located, move to the starting spot, click the left mouse button and draw the line. You can draw multiple lines (connected to each other) by single clicking the left mouse button when you want to draw a feature.

10. Once you have completed adding the feature, simply double-click the left mouse and it will be added to the map.

11. Then click the Save Data  button. This will save the feature and your description.

12. You can add additional features to the map following steps 3 to 11 above.

13. Once you have added and saved all features to the map, click the red  button to close the window.

14. Finally, to complete the process, click the Save and Continue  button.

Map Legend

Listed below are the types of features and their representation on the map:

-  On-Street Bicycle Facilities, Existing
-  On-Street Bicycle Facilities, Planned - Non-SRTS Funds
-  On-Street Bicycle Facilities, Proposed - SRTS Funds
-  Pedestrian and Bicycle Crossing Improvements, Existing
-  Pedestrian and Bicycle Crossing Improvements, Planned - Non-SRTS Funds
-  Pedestrian and Bicycle Crossing Improvements, Proposed - SRTS Funds
-  Sidewalk Improvements, Existing
-  Sidewalk Improvements, Planned - Non-SRTS Funds
-  Sidewalk Improvements, Proposed - SRTS Funds
-  Traffic Calming and Speed Reduction, Existing
-  Traffic Calming and Speed Reduction, Planned - Non-SRTS Funds
-  Traffic Calming and Speed Reduction, Proposed - SRTS Funds
-  Traffic Control Devices, Existing
-  Traffic Control Devices, Planned - Non-SRTS Funds
-  Traffic Control Devices, Proposed - SRTS Funds
-  Bike Lane, Existing
-  Bike Lane, Planned - Non-SRTS Funds
-  Bike Lane, Proposed - SRTS Funds
-  Off-Street Bike and Pedestrian Facilities, Existing
-  Off-Street Bike and Pedestrian Facilities, Planned - Non-SRTS Funds
-  Off-Street Bike and Pedestrian Facilities, Proposed - SRTS Funds
-  On-Street Bicycle Facilities, Existing
-  On-Street Bicycle Facilities, Planned - Non-SRTS Funds
-  On-Street Bicycle Facilities, Proposed - SRTS Funds
-  Pedestrian and Bicycle Crossing Improvements, Existing
-  Pedestrian and Bicycle Crossing Improvements, Planned - Non-SRTS Funds
-  Pedestrian and Bicycle Crossing Improvements, Proposed - SRTS Funds
-  Route Existing
-  Route Planned - Non-SRTS Funds
-  Route Proposed - SRTS Funds
-  Sidewalk Improvements, Existing
-  Sidewalk Improvements, Planned - Non-SRTS Funds
-  Sidewalk Improvements, Proposed - SRTS Funds
-  Traffic Calming and Speed Reduction, Existing
-  Traffic Calming and Speed Reduction, Planned - Non-SRTS Funds
-  Traffic Calming and Speed Reduction, Proposed - SRTS Funds
-  Traffic Control Devices, Existing
-  Traffic Control Devices, Planned - Non-SRTS Funds
-  Traffic Control Devices, Proposed - SRTS Funds